

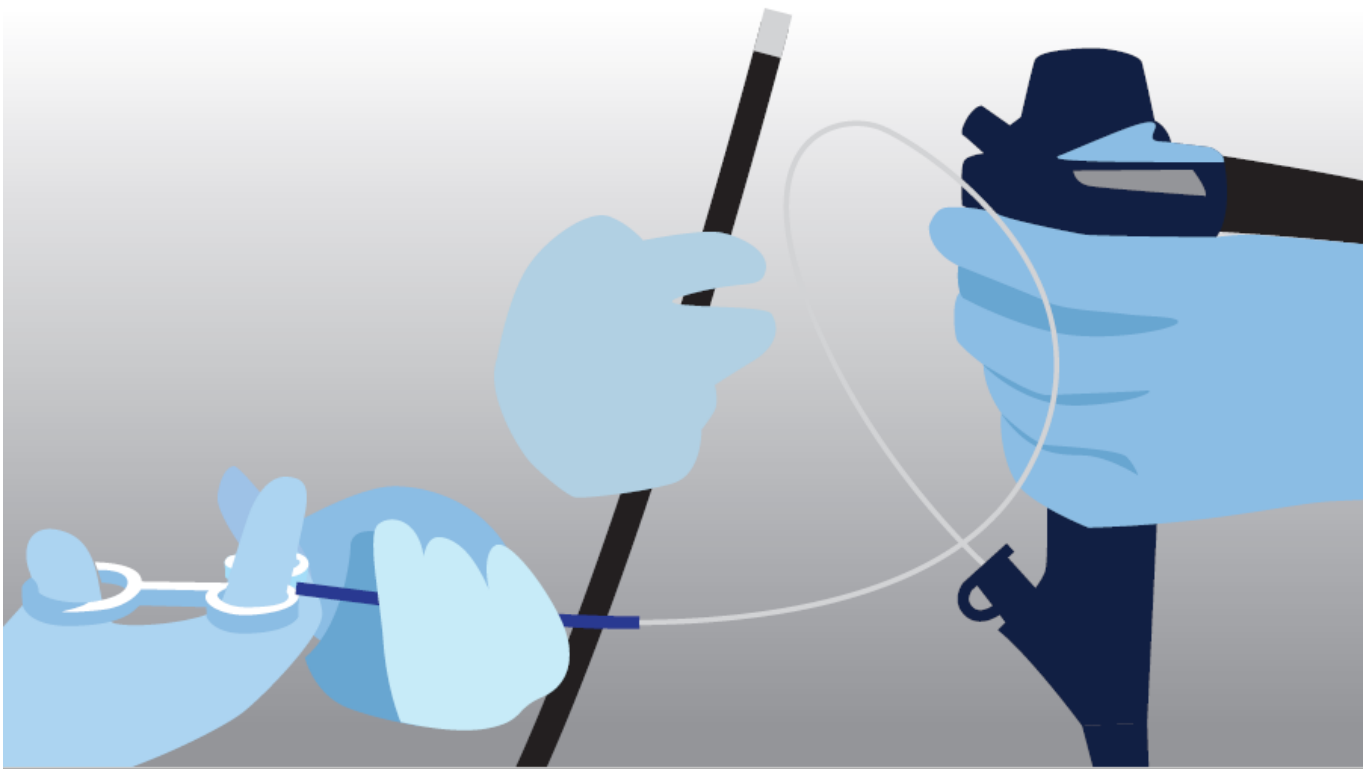
# 39<sup>th</sup> GEEW

*Gastroenterology and Endotherapy European Workshop:  
An hybrid event*

**19 – 21 June 2022**

**Brussels Expo – Belgium  
and live streaming**

**FIRST ANNOUNCEMENT**



# COURSE OBJECTIVES AND DESCRIPTION

Dear Colleague,

It is with great pleasure that we invite you to the **39<sup>th</sup> GEEW**, which is moving on with the established pattern of combining live demonstrations with a direct interaction between the participants, the moderators and the experts performing procedures.

The meeting concentrates on 2 days of **live demonstrations**: Monday and Tuesday, June 20 and 21, 2022. On Sunday June 19 morning, we propose different **hand's-on training stations** (on ESD, ERCP, EUS FNA and EUS cyst drainage, polypectomy, bariatric complications, bariatric suturing) at an additional small fee. On Sunday June 19 afternoon, we offer **"How I do it" lectures** focused on technical tricks allowing interactive discussion between the audience and top experts. This year we will also offer a **hand's-on session dedicated for nurses including** theoretical background, technical insight and tips and tricks for daily practice.

Foreign faculties will be on site in order to offer the most comprehensive panel of live demonstrations and procedures will be transmitted from Erasme Hospital endoscopy rooms to the auditorium with sitting audience as well as to the GEEW website (<https://www.live-endoscopy.com>) through a dedicated streaming platform accessible from anywhere upon registration.

The learning objectives of the course will be:

1. Evaluation of established and most recent endoscopy techniques, assessing their clinical utility in a multi-disciplinary setting
2. Description of pre-therapeutic assessment and post-treatment follow up
3. Detailed technical teaching of various procedures
4. Providing scientific appraisal of technologies, evidence-based, with comparison with other approaches
5. Recognition of the role of endoscopy in digestive diseases and its interaction with gastroenterology, surgery, oncology, radiology and transplantation
6. Incorporation of follow-up after the procedures, including clinical evaluation and pathology results
7. Teaching on prevention and treatment of adverse events

The intended audience includes gastroenterologists, surgeons, internists and oncologists, nurses and GI assistants, MD in training and medical students, biomedical engineers and industry partners.

The format is based on live cases transmitted from Erasme Hospital, produced by a professional team in collaboration with experienced physicians and dedicated to provide the most comprehensive illustration of the procedures. All over the procedures, information summarizing the most recent publications will be displayed to reinforce the discussion based on scientific evidence.

The cases will be performed by world-renowned experts in collaboration with local physicians and nursing staff. Every procedure will be performed by at least 2 experts working together in order to ensure maximal interaction with the audience. The scientific programme also offers State-of-the-Art lectures, Questions and Answers sessions.

The course language is English. No simultaneous translation will be provided.

The meeting will take place in the Auditorium 2000 of Brussels Expo. CME and Mdeon certifications will be requested. 39<sup>th</sup> GEEW is compliant with the MedTech Europe code of ethical business practice.

We look forward to welcoming you at our GEEW in 2022. All the team here is motivated to make this edition a modern approach of live meetings combining science and live demonstrations with interactive opportunities.

On behalf of the Organising Committee,



Jacques Devière, M.D., PhD  
Professor of Medicine  
Head, Department of Gastroenterology, Hepatopancreatology and Digestive Endoscopy,  
Erasme Hospital

# WHO IS WHO

## Organising Committee

Jacques DEVIÈRE, Chair

Marianna ARVANITAKIS

Daniel BLERO

Pierre EISENDRATH

Arnaud LEMMERS

Olivier LE MOINE

Alain VANDERMEEREN

Department of Gastroenterology, Hepatopancreatology and Digestive Oncology  
Erasme Hospital, Brussels, Belgium

## Guest Faculty

Marc BARTHET (France)

Jacques BERGMAN (The Netherlands)

Guido COSTAMAGNA (Italy)

Marc GIOVANNINI (France)

Mostafa IBRAHIM (Egypt)

Alberto MURINO (United Kingdom)

Horst NEUHAUS (Germany)

Maria PELLISE (Spain)

Nageshwar REDDY (India)

Damien TAN (Singapore)

Jeanin VAN HOOFT (The Netherlands)

Naohisa YAHAGI (Japan)

## Course Coordinator

Nancy BEAUPREZ

Gastroenterology Department, Erasme Hospital

Route de Lennik 808, BE-1070 Brussels, Belgium

TEL: + 32 2 555 49 00

[contactgeew@gmail.com](mailto:contactgeew@gmail.com)

<https://www.live-endoscopy.com>

## KEY FACTS

Interactive live streaming available through <https://www.live-endoscopy.com>

Meeting at Brussels Expo, close to the famous “Atomium”

Free post-review for all registered participants during 1 month after the congress

Congress language: English – no simultaneous translation

Accreditation: CME accreditation requested to UEMS/EACCME

EthicalMedTech certification is requested

## MAIN TOPICS AND PROCEDURES

- Advanced diagnostic imaging in upper and lower gastrointestinal endoscopy
- Capsule enteroscopy / colonoscopy
- Advanced imaging and therapy in inflammatory bowel disease
- Enteroscopy - Balloon and spiral assisted
- Artificial intelligence
- Mucosal resection and submucosal dissection
- Latest technologies of hemostasis for bleeding ulcers and varices
- EUS, FNA, contrast EUS
- Dilation of gastrointestinal strictures and stenting
- Zenker's diverticulotomy
- POEM and G-POEM
- Endoluminal surgery for morbid obesity
- Endoluminal surgery for GERD
- Duodenal resurfacing for the treatment of diabetes
- Therapeutic ERCP, cholangioscopy
- Extracorporeal shock wave lithotripsy
- Therapeutic EUS – Transmural anastomoses – Pseudocysts drainage and necrosectomy
- Treatment of surgical complications (stenoses, fistulae, leaks)
- Barrett's treatment
- Percutaneous gastrostomy and jejunostomy
- Transjugular liver biopsy, TIPS
- Percutaneous transhepatic cholangiography, cholangioscopy
- Magnets aided tissue remodelling
- Single use endoscopes



# PRELIMINARY PROGRAM

**SUNDAY, JUNE 19, 2022**

## 10:00 – 12:00 HAND'S-ON TRAINING SESSION

Practical session with model, expert and material: perfect time to discuss each step of the procedure with the expert and improve knowledge of the instruments.

### 10:00 – 12:00: 8 stations (limited number of participants)

- ESD: 2 stations (*advanced*)
- Bariatric complications: 1 station (*advanced*)
- Bariatric (suturing): 1 station (*advanced*)
- Polypectomy: 1 station (*initiation*)
- EUS-drainage: 1 station (*advanced*)
- EUS-FNA: 1 station (*initiation*)
- ERCP: 1 station (*initiation*)

## 12:00 – 13:00 Sponsored Satellite Symposium

13:00 – 14:00 *Lunch break*

## 14:00 - 17:15 HOW I DO IT SESSIONS

Everything you want to know but you dare not ask. These 20 minutes lectures will be the perfect opportunity to exchange with the experts during the 10 minutes Q&A time after each lecture.

### 14:00 – 15:30 HOW I DO IT SESSION 1

14:00 – 14:30 ESD: How to optimize the technique for adequate oncologic outcome?  
**Naohisa YAHAGI**

14:30 – 15:00 Diagnostic EUS: How to optimize your practice?  
**Damien TAN**

15:00 – 15:30 Ampullectomy: indications, outcome and follow-up  
**Marc BARTHET**

15:30 – 15:45 *Break*

### 15:45 – 17:15 HOW I DO IT SESSION 2

15:45 – 16:15 Serrated lesions: how to diagnose and treat them, how to recognize dysplasia?  
**Maria PELLISE**

16:15 – 16:45 Combining endoscopic and percutaneous biliary access  
**Horst NEUHAUS**

16:45 – 17:15 How to prevent post-ERCP pancreatitis?  
**Guido COSTAMAGNA**

17:15 – 17:30 *Break*

## 14:00 – 16:00 BREAK-OUT SESSION FOR NURSES

This session will be presented by **Marianna ARVANITAKIS** (Physician), **Sonia DUGARDEYN** and **Laila EDDAHRI** (Nurses)

14:00 – 15:00 All you want to know about...  
ERCP, EUS and other accessories  
or endoscopic devices

→ **Theoretical presentation available for onsite attendees and live streamed for virtual attendees, with Q&A**  
(session in French, dubbed in English)

15:00 – 16:00 Practical nurses workshop

→ **Practical hands'on workshop for onsite nurses attendees:**  
Handling of various endoscopic devices and explanations (session in English and French)

## 17:30 – 18:30 Sponsored Satellite Symposium

## MONDAY, JUNE 20, 2022

## TUESDAY, JUNE 21, 2022

### MORNING SESSION

Moderators: TBD

8:30 Welcome: Jacques DEVIERE

8:45 – 10:00 *Live transmission from Erasme Hospital\**

10:00 Michel Cremer State of the Art Lecture:  
**Jacques BERGMAN**  
Artificial intelligence: current status and  
Perspectives  
(with Q&A)

10:30 *Break*

10:45 – 13:00 *Live transmission from Erasme Hospital\**

13:00 – 14:00 *Lunch break*

### MORNING SESSION

Moderators: TBD

8:30 – 10:00 *Live transmission from Erasme Hospital\**

10:00 Lecture: **Marc BARTHET**  
Third space endoscopy: what we achieved and  
where are we heading to?  
(with Q&A)

10:30 *Break*

10:45 – 13:00 *Live transmission from Erasme Hospital\**

13:00 - 14:00 *Lunch break*

### AFTERNOON SESSION

Moderators: TBD

14:00 – 14:30 *Live transmission from Erasme Hospital\**

14:30 Lecture: **Marc GIOVANNINI**  
Focal pancreatic lesions: go to surgery, watch  
and wait or ablate?  
(with Q&A)

15:00 – 15:30 *Live transmission from Erasme Hospital\**

15:30 *Break*

15:45 – 17:30 *Live transmission from Erasme Hospital\**

17:30 Lecture: **Horst NEUHAUS**  
Toward single use scope or green endoscopy  
(with Q&A)

18:00 Adjourn

### AFTERNOON SESSION

Moderators: TBD

14:00 – 14:30 *Live transmission from Erasme Hospital\**

14:30 Lecture: **Jeanin VAN HOOFT**  
Biliopancreatic endoscopy: an evident need for  
centralisation to improve outcome?  
(with Q&A)

15:00 – 15:30 *Live transmission from Erasme Hospital\**

15:30 *Break*

15:45 – 17:15 *Live transmission from Erasme Hospital\**

17:15 Lecture: **Nageshwar REDDY**  
Future of advanced endoscopy training  
(with Q&A)

17:45 End of 39<sup>th</sup> GEEW

**18:00 – 19:00 *Sponsored Satellite Symposium***

*\*Live transmission from Erasme Hospital: see main topics and procedures*