



**European Society of  
Gastrointestinal Endoscopy**



**ESGE**

Fellowship Grants

**[esge.com](http://esge.com)**

## Dear Colleagues

Since its launch in the mid-nineties, the ESGE fellowship grant programme has become an established educational cornerstone. From its initial modest beginnings, in which four basic trainings were provided to young fully trained endoscopists, the programme has developed considerably.

ESGE now offers two types of grants. Module I fellowship grants allow successful applicants to visit top units to experience the day-to-day life in a center of excellence as part of the team. After successful completion of Module I, grantees may apply for Module II fellowship grants which incorporate longer stays with more in-depth learning. Hands-on training is also an integral part of Module II grants.

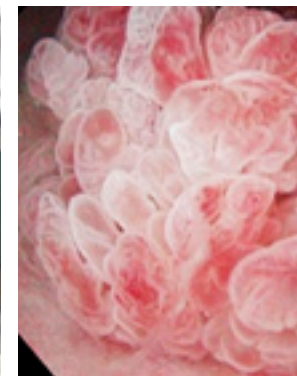
Alongside medical training, another valuable aspect that our grantees often report is that the ties forged frequently form the basis for a new network with like-minded colleagues.

ESGE Fellowship grants are an exclusive benefit to ESGE Individual Members and application is possible at [www.esge.com](http://www.esge.com).

ESGE would like to encourage all young endoscopists from Europe and beyond to take advantage of the opportunity to apply for this valuable educational experience.



**European Society of  
Gastrointestinal Endoscopy**



## ESGE General Information

The European Society of Gastrointestinal Endoscopy (ESGE) represents 49 national societies of endoscopy in Europe, the Mediterranean and North Africa. The aims and objectives of the society are to promote endoscopy and good endoscopic practice through international cooperation between endoscopists. The ESGE fellowship grants, detailed in this brochure, are an important ESGE endeavour toward this goal.

ESGE also actively supports the development of successful community of endoscopy services, in order to ensure high quality, safe, accurate, patient-centred and accessible endoscopic care throughout Europe. Through the diligent efforts of a very active guidelines committee, ESGE produces recommendations which appear in the society journal, *Endoscopy*.



ESGE individual members are eligible to apply online for ESGE fellowship grants. Find more information on [www.esge.com](http://www.esge.com), also regarding other educational activities and ESGE Days congresses.

# Requirements & Benefits

## Module I

### Basic Training with Experts

The grantee receives training on basic steps and specific techniques. A maximum of four weeks training is foreseen, depending on the techniques studied. Module I grants do not contain hands-on training.

## Module II

### Advanced Training with Experts

Grantees may apply for Module II after successfully completing Module I. Module II has a duration of three months. Grantees may expect hands-on training on specific techniques during this period. Research opportunities, clinical or experimental are possible in several units.

### Requirements

- Qualifications: Fully trained endoscopist
- Age: Below the age of 40
- Language: A high proficiency in English, French or German
- ESGE Individual Membership

### Benefits

- Successful candidates for Module I are awarded the sum of €1,300 to support costs incurred\*.
- Successful candidates for Module II are awarded the sum of €3,500 to support costs incurred.
- Certificate: After successful completion

## Host Units



Prof. Rainer Schöfl

### AUSTRIA

Krankenhaus der Elisabethinen, Linz  
www.elisabethinen.or.at

MODULE I & II *	NUMBER PER YEAR
PROCEDURE	
Upper GI endoscopy (diagnostic / therapeutic)	4000
Colonoscopy (diagnostic / therapeutic)	3000
ERCP	400
EUS (diagnostic / FNA / therapeutic)	300
ESD	40



Prof. Jacques Devière

### BELGIUM

Erasme Hospital, Brussels  
www.ulb.ac.be/erasme

MODULE I *	NUMBER PER YEAR
PROCEDURE	
Upper GI endoscopy (diagnostic / therapeutic)	5200
Colonoscopy (diagnostic / therapeutic)	4000
ERCP	1200
EUS (diagnostic / FNA / therapeutic)	400
Percutaneous procedures, TIPS	350
Video capsule endoscopy	280
Transjugular liver biopsies	400



Prof. Pierre Deprez

### BELGIUM

Cliniques Universitaires Saint-luc, Brussels  
www.saintluc.be • www.uclouvain.be/md

MODULE I & II *	NUMBER PER YEAR
PROCEDURE	
Upper GI endoscopy (diagnostic / therapeutic)	5000
Colonoscopy (diagnostic / therapeutic)	4200
ERCP	650
EUS	700
EMR-ESD	350
Enteroscopy	200
Therapeutic procedures (including POEM, RFA)	600



Prof. Nadan Rustemovic

### CROATIA

University Hospital Centre Zagreb, Croatia  
www.kbc-zagreb.hr

MODULE I & II *	NUMBER PER YEAR
PROCEDURE	
Upper GI endoscopy (diagnostic / therapeutic)	4850
Colonoscopy (diagnostic / therapeutic)	4800
Enteroscopy (capsule / DBE / single balloon)	250
ERCP	450
EUS (diagnostic / FNA / therapeutic)	400
ESD-EMR	150

\*Grantees visiting host units in Japan will be awarded €2,000 to support the increase of travel costs

\*Training in research possible



Prof. Peter Vilmann

**DENMARK**

Copenhagen University Hospital, Herlev

MODULE I & II	
PROCEDURE	NUMBER PER YEAR
Colonoscopy (diagnostic & therapeutic)	9000
Therapeutic ERCP	500
EUS	450
EUS-FNA	150
Gastroscopy (diagnostic & therapeutic)	4000
CLE, double balloon enteroscopy etc.	100
Video capsule endoscopy	200



Dr Abdel Meguid Kassem

**EGYPT**

Gastrointestinal Endoscopy and Liver Unit, Cairo  
[www.medicine.cu.edu.eg/students/index.php/en/](http://www.medicine.cu.edu.eg/students/index.php/en/)

MODULE I & II *	
PROCEDURE	NUMBER PER YEAR
Diagnostic upper gastrointestinal endoscopy with biopsy taking	5000
Esophageal variceal band ligation	3000
Fundal varix injection	2000
Colonoscopy	2000
Endosonography	250
ERCP	1500



Prof. Thierry Ponchon

**FRANCE**

Hopital Edouard Herriot, Lyon  
[www.chu-lyon.fr](http://www.chu-lyon.fr)

MODULE I & II *	
PROCEDURE	NUMBER PER YEAR
Upper GI endoscopy (diagnostic / therapeutic)	3000
Colonoscopy (diagnostic / therapeutic)	4000
Enteroscopy (capsule / DBE / single balloon / Navi Aid / other therapeutic)	300
ERCP	600
EUS (diagnostic / therapeutic)	800
ESD, POEM	200
Video capsule endoscopy	100



Dr Jean-François Rey

**FRANCE**

Institut Arnault Tzanck, St Laurent du Var  
[www.tzanck.org](http://www.tzanck.org)

MODULE I & II	
PROCEDURE	NUMBER PER YEAR
Upper GI endoscopy (diagnostic / therapeutic)	3000
Colonoscopy (diagnostic / therapeutic)	3000
Enteroscopy (capsule / DBE / single balloon / Navi Aid / other therapeutic)	120
ERCP	500
EUS (diagnostic / FNA / therapeutic)	600
Video capsule endoscopy	120



Prof. Dr. Helmut Messmann

**GERMANY**

Klinikum Augsburg, Augsburg  
[www.klinikum-augsburg.de](http://www.klinikum-augsburg.de)

MODULE I *	
PROCEDURE	NUMBER PER YEAR
Gastroscopy	5000
Colonoscopy	4000
ERCP	1200
Endoscopic ultrasound	1000
ESD	200
POEM	20 - 30
MUSE	10



Prof. Horst Neuhaus

**GERMANY**

Evangelisches Krankenhaus, Düsseldorf  
[www.evk-duesseldorf.de](http://www.evk-duesseldorf.de) • [www.endo-duesseldorf.com](http://www.endo-duesseldorf.com)

MODULE I *	
PROCEDURE	NUMBER PER YEAR
Upper GI endoscopy (diagnostic / therapeutic)	4500
EMR / ESD in the upper GIT	190 / 90
Radiofrequency ablation / Hybrid APC / Cryotherapy	120
POEM / STER	70
Colonoscopy (diagnostic / therapeutic)	3600
EMR / ESD in the lower GIT	570 / 80
Enteroscopy (capsule / DBE / single balloon / motorized spiral)	200
ERCP, cholangioscopy	900
Percutaneous transhepatic interventions	270
EUS (diagnostic / FNA / therapeutic)	950



Prof. Dr. Helmut Neumann

**GERMANY**

Interventional Endoscopy Center, University Hospital, Mainz  
[www.unimedizin-mainz.de/1-med/startseite/startseite.html](http://www.unimedizin-mainz.de/1-med/startseite/startseite.html)

MODULE I & II *	
PROCEDURE	NUMBER PER YEAR
EGD	3800
Colonoscopy	2000
ERCP	500
EUS	320
Laparoscopy	350



Prof. Istvan Ràcz

**HUNGARY**

Petz Aladár Teaching Hospital, Győr  
<http://raczi.sze.hu/angolhonlap2.htm>

MODULE I & II *	
PROCEDURE	NUMBER PER YEAR
Upper GI endoscopy (diagnostic / therapeutic)	3300
Colonoscopy (diagnostic / therapeutic)	2500
Enteroscopy (capsule / DBE / single balloon / Navi Aid / other therapeutic)	100
ERCP	430
EUS (diagnostic / FNA)	150
Pediatric endoscopy	100



Dr Nageshwar D. Reddy

**INDIA**

Asian Institute of Gastroenterology, Hyderabad  
[www.aigindia.net](http://www.aigindia.net)

MODULE I & II	
PROCEDURE	NUMBER PER YEAR
Upper GI endoscopy (diagnostic / therapeutic)	25,600
Colonoscopy (diagnostic / therapeutic)	7500
Enteroscopy (capsule / DBE / single balloon / Navi Aid / other therapeutic)	185
ERCP	5200
EUS (diagnostic / FNA / therapeutic)	1250
Video capsule endoscopy	180
Lower / upper GI EMR	60
POEM	200



Dr Elisabetta Buscarini

**ITALY**

Ospedale Maggiore, Crema  
www.hcrema.it

MODULE I & II	
PROCEDURE	NUMBER PER YEAR
Upper GI endoscopy (diagnostic / therapeutic)	3300
Colonoscopy (diagnostic / therapeutic)	3000
Enteroscopy (capsule / DBE / single balloon / Navi Aid / other therapeutic)	100
ERCP	300
EUS / IDUS / EUS-FNA	400
Pediatric endoscopy	150



Dr Paolo Giorgio Arcidiacono

**ITALY**

Vita Salute San Raffaele University Hospital, Milan  
www.hsr.it

MODULE I & II	
PROCEDURE	NUMBER PER YEAR
EUS diagnostic and therapeutic	2000
ERCP therapeutic	700



Prof. Guido Costamagna

**ITALY**

Fondazione Policlinico "A. Gemelli", Rome  
www.eetc.it - www.policlinicogemelli.it

MODULE I & II	
PROCEDURE	NUMBER PER YEAR
Upper GI endoscopy (diagnostic / therapeutic)	3500
Colonoscopy (diagnostic / therapeutic)	4000
Enteroscopy (capsule / DBE / single balloon / Navi Aid / other therapeutic)	200
ERCP	1200
EUS (diagnostic / FNA / therapeutic)	1500
POEM	100
Zenker	50



Prof. Jacques Bergman

**THE NETHERLANDS**

Academic Medical Center, Amsterdam  
www.amc.uva.nl

MODULE I *	
PROCEDURE	NUMBER PER YEAR
Upper GI endoscopy (diagnostic / therapeutic)	3500
Colonoscopy (diagnostic / therapeutic)	2500
ERCP	1100
EUS (diagnostic / FNA / therapeutic)	750



Prof. Lars Aabakken

**NORWAY**

Rikshospitalet University Hospital, Oslo  
www.oslo-universitetssykehus.no/

MODULE I *	
PROCEDURE	NUMBER PER YEAR
Upper GI endoscopy (diagnostic / therapeutic)	1400
Colonoscopy (diagnostic / therapeutic)	1200
Enteroscopy (capsule / DBE / single balloon / Navi Aid / other therapeutic)	150
ERCP	600
EUS (diagnostic / FNA / therapeutic)	300



Dr Tomasz Marek

**POLAND**

Medical University of Silesia, Katowice  
Endoscopy unit, Department of Gastroenterology and Hepatology

MODULE I	
PROCEDURE	NUMBER PER YEAR
Upper GI endoscopy (diagnostic / therapeutic)	350 / 2150
Colonoscopy (diagnostic / therapeutic)	450 / 1350
ERCP (therapeutic)	950



Prof. Mário Dinis-Ribeiro

**PORTUGAL**

Serviço de Gastrenterologia, Porto  
http://ipoporto.pt/servico/gastrenterologia

MODULE I & II *	
PROCEDURE	NUMBER PER YEAR
Upper GI endoscopy	2000
Colonoscopy	2000
Upper GI EMR / ESD	20 / 80
Lower GI mucosectomy / polypectomy	100 / 1000
Dilation / stenting	100 / 200
EUS	300
EUS-FNA	100



Dr Björn Rembacken

**UNITED KINGDOM**

Leeds Teaching Hospitals, Leeds  
www.leedsteachinghospitals.com

MODULE I	
PROCEDURE	NUMBER PER YEAR
Upper GI endoscopy (diagnostic / therapeutic)	9100 / 900
Colonoscopy (diagnostic / therapeutic)	6500 / 1000
Enteroscopy (capsule / DBE / single balloon / Navi Aid / other therapeutic)	50 / 15
ERCP (therapeutic)	850
EUS (diagnostic / FNA / therapeutic)	650



Prof. Stephen Pereira

**UNITED KINGDOM**

University College Hospital, London  
www.uclh.nhs.uk

MODULE I *	
PROCEDURE	NUMBER PER YEAR
ERCP, enteral stent insertion, choledochoscopy	1000
Diagnostic / staging EUS	300
EUS-FNA	150
Laser endoscopy, oesophageal stents, EMR	300



Prof. Krish Ragunath

**UNITED KINGDOM**

Nottingham Digestive Diseases Centre, Nottingham  
www.nottingham.ac.uk

MODULE I	
PROCEDURE	NUMBER PER YEAR
Upper GI Endoscopy	6000
Lower GI Endoscopy (colonoscopy)	5000
Lower GI Endoscopy (flexible sigmoidoscopy)	4000
ERCP	900
EUS	800
Video capsule endoscopy	200
POEM	30





Through a mutual cooperation, **ESGE** and the **Japan Gastroenterological Endoscopy Society** (JGES) offer one grant, module I, per year in an exchange programme. The selected ESGE grantee is assigned to one of the leading Japanese institutions below.



Prof. Ryu Ishihara

**OSAKA, JAPAN**

Osaka International Cancer Institute  
<http://www.mc.pref.osaka.jp.e.abv.hp.transer.com>

PROCEDURE	NUMBER PER YEAR
EGD	6500
Colonoscopy	2500
Endoscopic resection for esophageal cancer	160
Endoscopic resection for gastric cancer	290
Endoscopic resection for colonic lesions	450



Prof. Hironori Yamamoto

**TOCHIGI, JAPAN**

Department of Medicine, Division of Gastroenterology,  
 Endoscopy Center, Jichi Medical University, Tochigi  
[www.jichi.ac.jp/english/about/hospital.html](http://www.jichi.ac.jp/english/about/hospital.html)

PROCEDURE	NUMBER PER YEAR
Upper GI	5569
ESD (upper GI)	277
Lower GI	3056
EMR (colorectal)	972
ESD (colorectal)	131
Enteroscopy (DBE)	392
ERCP	680
Double-balloon ERC	82
EUS	622



Prof. Mitsuhiro Fujishiro

**TOKYO, JAPAN**

Department of Gastroenterology,  
 The University of Tokyo Hospital, Tokyo  
[www.h.u-tokyo.ac.jp/english/](http://www.h.u-tokyo.ac.jp/english/)

PROCEDURE	NUMBER PER YEAR
Image enhanced endoscopy such as NBI, BLI, and i-scan	5000
EMR	747
EUS	1034
ESD	362



Prof. Haruhiro Inoue

**TOKYO, JAPAN**

Digestive Disease Center,  
 Showa University Koto Toyosu Hospital, Tokyo  
[www10.showa-u.ac.jp/~ddc-kt/Page\\_E\\_00.html](http://www10.showa-u.ac.jp/~ddc-kt/Page_E_00.html)

PROCEDURE	NUMBER PER YEAR
Upper GI endoscopy (diagnostic / therapeutic)	3000 / 300
Colonoscopy (diagnostic / therapeutic)	3000 / 300
ERCP	300
POEM	300
ESD	150
ARMS	20



Prof. Takao Itoi

**TOKYO, JAPAN**

Department of Gastroenterology and Hepatology  
 Tokyo Medical University, Tokyo  
<http://hospinfo.tokyo-med.ac.jp/english/index.html>

PROCEDURE	NUMBER PER YEAR
ERCP-related procedure	1000
Diagnostic EUS	600
EUS-FNA	200
Interventional EUS	120
Balloon enteroscopy-assisted ERCP	100



Prof. Yutaka Saito

**TOKYO, JAPAN**

Endoscopy Division,  
 National Cancer Center Hospital, Tokyo  
[www.ncc.go.jp/en/index.html](http://www.ncc.go.jp/en/index.html)

PROCEDURE	NUMBER PER YEAR
Gastric EMR / ESD	388
Esophageal EMR / ESD	211
Colorectal EMR / ESD	2106 / 214
EUS	482
EUS-FNA	78



Prof. Kazuki Sumiyama

**TOKYO, JAPAN**

Department of Endoscopy  
 Jikei University School of Medicine, Tokyo  
[www.jikei-endoscopy.com](http://www.jikei-endoscopy.com)

PROCEDURE	NUMBER PER YEAR
Upper GI	11000
Lower GI	6514
ERCP	770
Balloon enteroscopy	150
Emergency endoscopy	1500
Upper GI EMR/ESD	250
Lower GI EMR/ESD	1100
EUS	320



Prof. Naohisa Yahagi

**TOKYO, JAPAN**

Division of Research and Development for Minimally Invasive  
 Treatment, Cancer Center, Keio University School of Medicine, Tokyo  
[www.med.keio.ac.jp/index-e.html](http://www.med.keio.ac.jp/index-e.html)

PROCEDURE	NUMBER PER YEAR
EMR and polypectomy	600
Pre-ESD diagnostic examination (chromoendoscopy and NBI magnification endoscopy)	500
ESD	400



Prof. Shin-ei Kudo

**YOKOHAMA, JAPAN**

Digestive Disease Center  
 Showa University Northern Yokohama Hospital, Yokohama  
[www.showa-ddc.com/eng](http://www.showa-ddc.com/eng)

PROCEDURE	NUMBER PER YEAR
EGD	7800
Colonoscopy	7900
EMR	1320
ESD (Upper GI)	160
ESD (Lower GI)	220
EUS	140
ERCP	360



## **ESGE** Individual Membership includes:

- Reduced registration fees for ESGE workshops
- The journal **Endoscopy** (printed and online access)
- ESGE eLearning material free of charge
- Eligibility for ESGE Grant Programme
- Access to members only area on ESGE website



More information and application at [www.esge.com](http://www.esge.com)

### Contact

ESGE  
c/o Hamilton Services GmbH  
Landwehr Str. 9  
80336 Munich, Germany

T +49 - 89 - 907 79 36 - 11  
F +49 - 89 - 907 79 36 - 20

secretariat@esge.com  
www.esge.com

Visit us on  