

# Faculty

Roland M **Schmid**, Christoph **Schlag**, Mohamed **Abdelhafez**  
Dept. of Medicine II, Klinikum Rechts der Isar, Technical Univ. of Munich, Ismaninger Str. 22, 81675 Muenchen, DE

Frieder **Berr**, Andrej **Wagner**, Dept. of Medicine I, Paracelsus Medical University, Strubergasse 22, 5020 Salzburg, AT

Hans-Peter **Allgaier**  
Department of Medicine, Diakoniekrankenhaus, 79110 Freiburg, DE

Franz-Ludwig **Dumoulin**  
Dept. of Medicine, Gemeinschaftskrankenhaus, 53113 Bonn, DE

Jürgen **Hochberger**, Song-Sa **Dammer**  
Dept. of Gastroenterology, Vivantes Klinikum im Friedrichshain Landsberger Allee 49, 10249 Berlin, DE

Sergey V. **Kantsevoy**  
Institute for Digestive Health & Liver Diseases, Mercy Med. Center University of Maryland School of Medicine, Baltimore, MD, USA

Gerhard **Kleber**  
Department of Medicine I, Ostalb-Klinikum, 73428 Aalen, DE

Thierry **Ponchon**  
Hôpital Edouard Herriot, Spécialités Digestives, Lyon, FR

Tsuneo **Oyama**, Akiko **Takahashi**  
Dept. of Endoscopy, Saku Central Hospital Advanced Care Center, Zip code 3850051, 3400-28 Nakagomi, Saku, Nagano, JP

Takashi **Toyonaga**  
Dept. of Internal Medicine, Graduate School of Medicine, Kobe University, 7-5-1 Chu-o-ku, Kusunoki-Cho, Kobe, Hyogo, 650-0017, JP

Hans **Seifert**  
Department of Internal Medicine - Gastroenterology, University Clinics Oldenburg, Rahel-Straus-Str. 10, 26133 Oldenburg, DE

Edris **Wedi**  
Gastroenterology & GI Oncology, Univ-klinikum, Göttingen, DE

Naohisa **Yahagi**  
Cancer Center, Keio University School of Medicine, 35 Shinanomachi, Shinjuku-ku, Tokyo, 160-8582, JP

Alexander **Ziachehabi**  
Department of Internal Medicine IV, Ordens Hospital, Linz, AT

# Sponsors

(list of 2018, sponsoring not yet confirmed)



**Leonie Wild Charitable Foundation**

Endorsed by **Endo-Skills Update**  
**Munich 2019**  
**ESGE** Early Gastrointestinal Cancer

June 28, 2019  
8:00 - 16:15

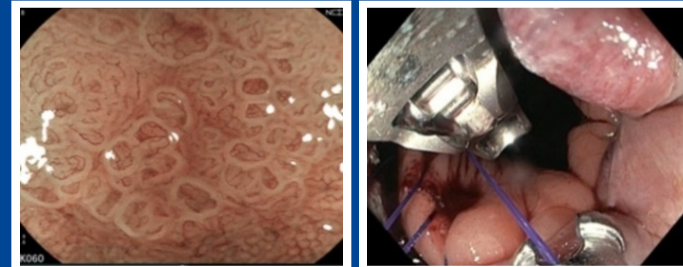
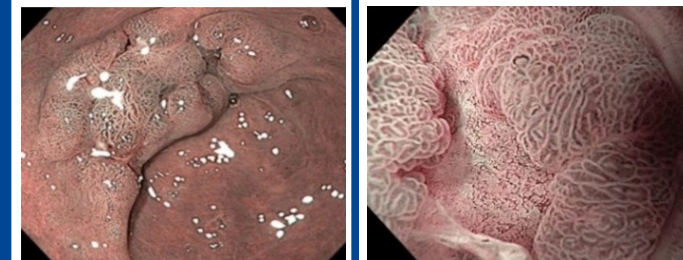
credits  
8 DFP

Dept. of Medicine II, Klinikum rechts der Isar  
Technical University of Munich

Directors  
Roland M. Schmid / DE  
Thierry Ponchon / FR  
Frieder Berr / AT

Organizers  
Christoph Schlag / DE  
Mohamed Abdelhafez / DE  
Andrej Wagner / AT

Registration [endo19@mri.tum.de](mailto:endo19@mri.tum.de)  
[www.early-cancer.eu](http://www.early-cancer.eu)



Klinikum rechts der Isar  
Technische Universität München



PARACELSUS  
MEDIZINISCHE PRIVATUNIVERSITÄT

Dear Colleagues,

we invite you to improve your skills in endoscopic analysis, therapeutic decision making and endoscopic resection of early neoplasias of the gastrointestinal tract:

- Accurate endoscopic assessment of surface and microvascular structure for prediction of pT category
- Indications for endoscopic versus minimal invasive surgical resection techniques
- Techniques for endoscopic en-bloc resection and suturing

This meeting focuses on all aspects to optimize endoscopic analysis and staging of neoplasias as well as strategies and performance of minimally invasive resections – to enhance proficiency in this new field.

We hope to stimulate your interest and welcome you to the Endo-Skill Update 2019 .



Th Ponchon president of ESGE  
 R M Schmid Klinikum rechts der Isar, Technical Univ of Munich  
 F Berr PMU Salzburg

The Update takes place under the patronage of

Endorsed by



## LIVE demonstrations, 4 cases:

### Endoscopic staging & indication (15 min LIVE each)

### En-bloc resection +/- suturing (60 min LIVE each)

	<b>Toyonaga T</b>	<b>Yahagi N</b>
lesion e.g.	GE-junction, AdenoCa	LST colon or duodenum
Diagnosis & comments	Hochberger J, Allgaier HP	Wagner A, Kleber G
	<b>Kantsevov SV, Seifert H</b>	<b>Oyama T, Takahashi A</b>
lesion e.g.	LST anorectal, ESD & suturing	gastric or esophageal NPL
Diagnosis & comments	Dumoulin FL, Schlag Ch	Wedi E, Ziachehabi A

## PRESENTATIONS (4 topics, 20 min each)

8:00 Welcome

### Session I - 8:15 - 10:30

#### Endoscopic Analysis & Indication - upper GI tract

Chairs: Schmid RM, Oyama T, Seifert H

Ziachehabi A: **Invasive early cancer in the gastrointestinal tract**

Oyama T: **How to stage early cancer in the upper GI tract (Quiz)**

### 10:30 - 11:00 Coffee break and Industry Exhibition

### Session II - 11:00 - 12:30

#### Outcome of ESD of GI Neoplasias

Chairs: Hochberger J, Kantsevov SV, Dumoulin FL

Ponchon Th: **Results of ESD & benchmarks in Japan and Europe**

### 12:30 - 13:30 Lunch and Industry Exhibition

### Session III - 13:30 - 16:15

#### Endoscopic Analysis & Indication - lower GI tract

Chairs: Ponchon Th, Yahagi N, Toyonaga T

Yahagi N: **How to stage early neoplasias in colorectum and duodenum (Quiz)**

Conclusions and Farewell Yahagi N, Schmid RM

## Registration

Participation fee: 75 € (ESGE/DGVS/ÖGGH: 50 €)

Registration under [endo19@mri.tum.de](mailto:endo19@mri.tum.de)

## Credits

8 DFP points (ID **pending**)  
 (Diplom-Fortbildung, **URL**)

## Contact Information

PD Dr Christoph Schlag

email: [endo19@mri.tum.de](mailto:endo19@mri.tum.de)

URL [www.early-cancer.eu](http://www.early-cancer.eu)

# Venue

Technical University of Munich, TranslaTUM  
 Einstein Str 25, 81675 Muenchen, Germany

