



European Society of  
Gastrointestinal Endoscopy

**ESGE**

Strategic Plan  
& Structure

**2025 - 2029**

**ESGE** - The Home of Endoscopy

<b>1</b>	<b>PREAMBLE</b>	5
<b>2</b>	<b>ESGE VISION, MISSION AND CORE VALUES - OUR PROMISE TO OUR COMMUNITY</b>	6
	Strategy: From Vision to Implementation	7
	ESGE's commitment to Sustainability	8
	ESGE's commitment to Diversity, Equity & Inclusion (DEI)	10
<b>3</b>	<b>HISTORY</b>	11
<b>4</b>	<b>LEGAL STRUCTURE</b>	11
<b>5</b>	<b>ESGE STRUCTURE</b>	12
	Overall society structure and governance	12
	ESGE Committee and Working Group structure	13
	Membership structure	14
<b>6</b>	<b>OPERATIONAL / ADMINISTRATIVE MANAGEMENT</b>	17
	ESGE Office	17
	Financial management	17
<b>7</b>	<b>PARTNER SOCIETIES</b>	20



# 1

## PREAMBLE

---

The European Society of Gastrointestinal Endoscopy (ESGE) is a continuously growing and evolving scientific society. Its structure and activities are continuously developing to adapt to the demands of our field and our community. Therefore in 2025, an update of the strategic plan was developed by the Governing Board.

The core business of ESGE is gastrointestinal endoscopy that has a paramount societal importance in the screening, diagnosis, and management of digestive diseases.

Throughout its 60-year existence ESGE has been dedicated to advancing the quality of care, by providing face-to-face and online educational activities for our members and member societies. ESGE promotes training in endoscopy by awarding fellowship training grants and the traveling endoscopy programme (TEP). ESGE promotes and encourages high quality research and technological innovation in the field of gastrointestinal endoscopy, through the awarding of research grants in the research DEN competition and the innovation of the year award. As part of our mission to provide guidance in the daily practice of gastrointestinal endoscopy, ESGE continuously provides evidence-based resources including clinical guidelines, quality of care criteria, endoscopy training curricula, position statements, and technology reviews.

ESGE Days, our annual scientific congress, has become one of the most important endoscopy focused meetings in the world, to underscore and facilitate dissemination of science, knowledge and technical developments in the field of gastrointestinal endoscopy with active collaboration between endoscopists and industry partners.

In large part all the output of our society is based upon the volunteer activities of hundreds of endoscopists and member societies throughout Europe, the Mediterranean basin and the Middle East.

### **Content of the updated Strategic plan:**

- Definition of ESGE's vision, mission and core values
- Definition of ESGE's strategic aims and pillars during the next five years
- Outline of ESGE's history, structure and administrative management

# 2

## ESGE VISION, MISSION AND CORE VALUES OUR PROMISE TO OUR COMMUNITY

ESGE's mission is to advance the practice of gastrointestinal endoscopy through guidance, education, innovation, and the dissemination of knowledge, skills and research, while continually promoting high-quality standards in clinical practice. Our committees and working groups will be the driving force behind these initiatives.

The first strategic plan was published in 2019. Now, five years later, the ESGE Governing Board has undertaken a comprehensive review of the Society's goals, responsibilities, and strategy. This new strategic plan reflects the updated ESGE vision, detailing the rules of every committee and working group, and is built on the foundation of our core values.

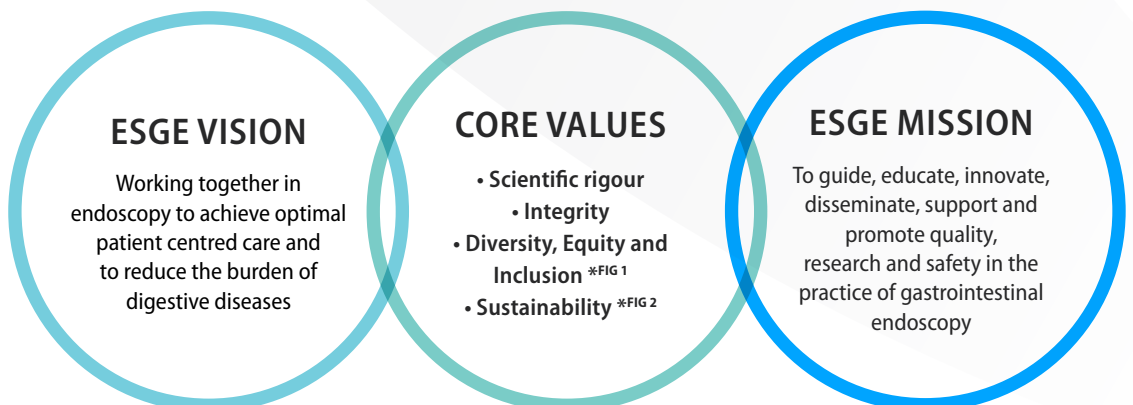
With scientific rigour at its core, ESGE will fulfill its mission by delivering evidence-based resources, including clinical guidelines, quality improvement criteria, endoscopy training curricula, position statements, and reviews on technical and technological innovations.

These resources will be shared through face-to-face and online learning programmes. With the newly launched ESGE Academy (2024) ESGE has created a hub for our e-learning activities and an endoscopy online library. The ESGE Academy provides members access to all ESGE materials and publications and in the future will offer opportunities for networking within the platform.

Our communication efforts leverage a diverse range of channels, our high-impact Journal *Endoscopy*, ESGE Days, the Travelling Endoscopy Programme (TEP), ESGE Webinars, social media, the newly launched ESGE Endoscopy Camp (2024), and the upcoming ESGE Research Camp (2025).

ESGE remains fully committed to supporting our member societies, individual members, and partner organizations. We will continue to engage with our community, offering support through in-person and virtual meetings, as well as through research and fellowship training grants.

To realize our vision of providing optimal patient care, ESGE will foster a spirit of openness, collaboration, and inclusivity throughout the global gastrointestinal endoscopy community.



## STRATEGY: FROM VISION TO IMPLEMENTATION



## ESGE'S COMMITMENT TO SUSTAINIBILITY

---

Sustainability is a key priority for **ESGE**.

We are committed to embedding environmentally responsible practices across all our activities, ensuring that our vision aligns with a sustainable future for endoscopy and healthcare.

### **ESGE's initiatives include:**

---

- Providing guidance and educational activities **on how to reduce the environmental impact of GI endoscopy**
- Developing publications for **reporting scientific studies on sustainability**,
- **Fostering collaboration with industry and policymakers** to reduce the environmental impact of GI endoscopy,
- Establishing a **research network to support studies** focused on green initiatives.
- **Reducing the environmental footprint** of our organization.
- Maintaining the **integration of sustainability into scientific sessions at ESGE Days**



REDUCE • REUSE • RECYCLE • RESEARCH • RETHINK

## THE “5 RS” OF GREENER ENDOSCOPY

---

### Reduce...

---

- **overall waste production and misclassification** → Reduction up to 40% of kgCO<sub>2</sub>e per endoscopic procedure
- **overuse of unnecessary materials**
- **unnecessary biopsies - only when indicated** → 1 biopsy jar with 1 specimen = 0.29 kgCO<sub>2</sub>e

### Reuse...

---

- **gowns** – up to 66% reduction of the carbon footprint compared to single-use gowns.
- **endoscopic accessories** between procedures, when combining upper GI endoscopy followed by colonoscopy within the same patient (e.g., biopsy forceps or polypectomy snares).
- **sterile water** plastic bottles and procedure's leftover sterile water for 'bed-side' cleaning.

### Recycle...

---

- Place **accessible** and **labelled recycling bins** in your endoscopy unit.
- **Segregate individual recyclable components** (plastic, paper, cardboard, glass, and metals).
- **Train endoscopy staff** on waste management – up to 32% of waste carbon footprint reduction.

### Further Research is needed to:

---

- **Reduce unnecessary** GI endoscopic procedures and to lengthen follow-up intervals.
- Determine the performance and environmental impact of **non-endoscopic diagnostic alternatives**.
- Estimate the carbon footprint of **single-use and reusable endoscopes/accessories**.
- Define green **key performance measures**.

### Rethink...

---

- **reduce unnecessary endoscopic procedures**
  - Follow **guideline-supported recommendation pathways** and assess appropriateness of **non-endoscopic diagnostic procedures**.
- **educate and raise awareness amongst staff**
  - Elect a Green Endoscopy Champion to disseminate **good practice** and teach the team how to **separate medical waste**.
- **define the use of single-use vs reusable accessories**
  - Involve **manufacturers and stakeholders**, challenge them to **disclose the lifecycle** of their products.

## ESGE'S COMMITMENT TO DIVERSITY, EQUITY & INCLUSION (DEI)

The European Society of Gastrointestinal Endoscopy aims to apply these **12 principles** within **ESGE**, at the workplace, with patients, and in academia

### ESGE ORGANIZATION

1. Promotion of equity of opportunity, fair treatment, nondiscrimination, and diversity of health care professionals
2. Dissemination of the principles of DEI among national member societies
3. Diversity of memberships of the different working groups and committees

### WORKPLACE

4. Collaborative workplace settings and empowerment in GI endoscopy team
5. Promotion of equitable access to high quality endoscopy training
6. Providing adapted workplace conditions for personnel with disabilities and/or special needs
7. Providing comprehensive mentorship and equitable sponsorship to support professional development



### PATIENTS

8. Identifying, discussing, and accommodating reasonable patient preferences
9. Educational campaigns targeting health care professionals and patients

### ACADEMIA

10. Support for underrepresented scholars and minorities pursuing research in endoscopy
11. Mentorship and sponsorship mitigating barriers to academic careers for underrepresented endoscopy scholars
12. Increasing awareness of diversity and equity in the field of endoscopy research

# 3

## HISTORY

---

By the early 1960s GI endoscopy was playing an increasingly important role that was reflected at gastroenterology congresses. Thus, in 1960 at the 7<sup>th</sup> Association des Sociétés Nationales Européennes et Méditerranéennes de Gastroentérologie (ASNEMGE) Congress, in Leiden, the Netherlands, there was a symposium on a variety of endoscopy topics. At this gathering, a group of endoscopists decided to establish a club that would concentrate on promoting GI endoscopy, the “European Endoscopic Club.” Four years later, at the 1964 ASNEMGE Congress in Brussels, Belgium, the members of the club convened with other interested endoscopists and agreed to form the European Society of Gastrointestinal Endoscopy (ESGE).

ESGE was founded as an umbrella association and today represents national medical societies of gastroenterology/gastrointestinal endoscopy throughout Europe, the Mediterranean Basin, and the Middle East. In 2007, ESGE opened its doors to individual members (physicians) worldwide.

Founded by Professor Ludwig Demling in 1969 the journal *Endoscopy* represents the official organ of ESGE and is today a leading journal in GI endoscopy.

In April 2018, ESGE established its first standalone congress, ESGE Days, holding its first meeting in Budapest, Hungary. ESGE Days aims to be the primary scientific forum for GI endoscopists in Europe, the Mediterranean Basin, and the Middle East and occurs on an annual basis.

# 4

## LEGAL STRUCTURE

---

In 2022, ESGE relocated its legal headquarters from Lyon, France to Munich, Germany. ESGE is a non-profit scientific society registered in Munich, Germany consisting of the European Society of Gastrointestinal Endoscopy e.V. and the ESGE Conventions GmbH.

Since January 2023, ESGE directly employs its own dedicated office team.

The ESGE Statutes (last version as of 2022) define the society’s structure, functions, rules and principles of ESGE membership, and the duties of its elected officials.

The ESGE Rules of Procedure are the rules for the conduct of the work of the Society, enacting the principles laid out in the ESGE Statutes.

# 5

## ESGE STRUCTURE

### Overall society structure and governance

ESGE is governed according to its statutes as well as by a Governing Board, Executive Committee, General Assembly of its 40 Member Societies, Committees and Working Groups (Fig. 1).

ESGE Membership is open to both national societies (Member Societies) and individuals (Individual Members). Every two years, at the General Assembly, the Member Societies (one vote each) elect 5 councillors to the Governing Board; beforehand, the Individual Members elect 2 councillors via an online vote.

The Society's Executive Committee officials are elected from within the Governing Board by its voting members.

The Governing Board includes the above elected members and co-opted non-voting members (Working Group Chairs and the journal *Endoscopy's* editor-in-chief). Co-opted Governing Board members are not eligible for nomination for Executive Committee positions.

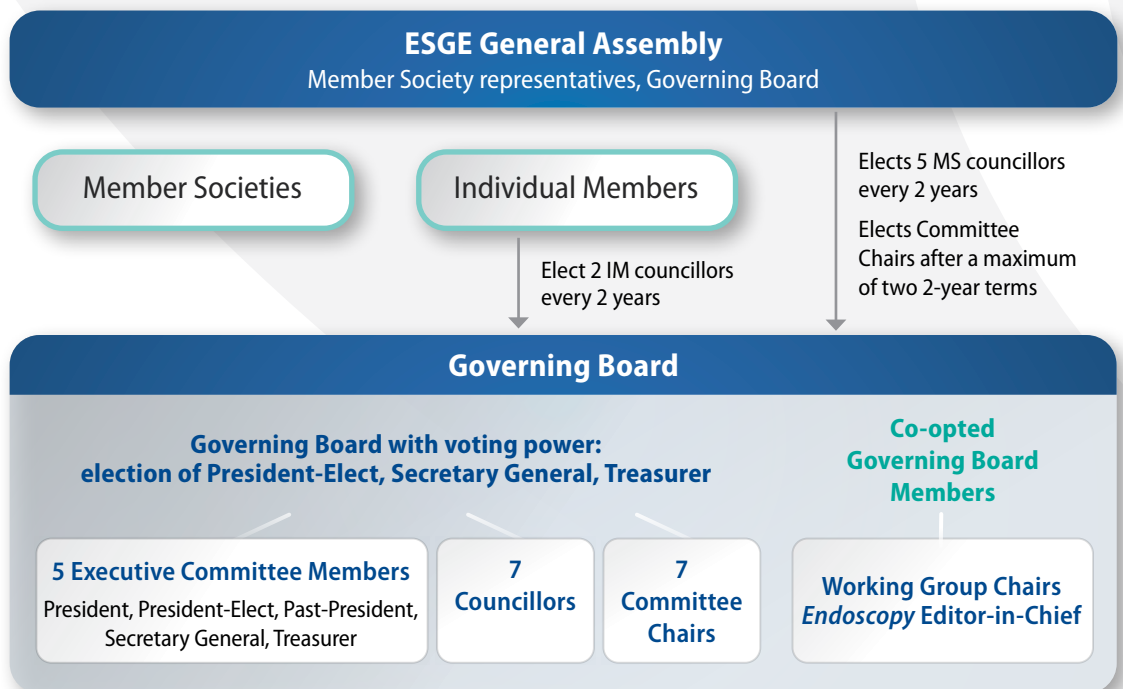


Fig. 1: ESGE structure

## ESGE Committee and Working Group structure

ESGE Committees and Working Groups are responsible for supporting and managing the core activities of the Society, reflecting our strategic objectives. The Working Groups are a subset of the Committees.

Every two years, ESGE puts out a call to its Individual Members to apply for open Committee chair position(s). They are subsequently elected at the General Assembly.

The Working Group chairs are nominated and appointed by the Executive Committee together with the Committee Chairs. Further information may be found in the ESGE Rules of Procedure.

Figure 2 & 3 below provide an overview of the ESGE Committees and Working Groups supporting our strategic objectives.

### Current ESGE Committees



Fig. 2: ESGE Committee Structure

### Current ESGE Working Groups



Fig. 3: ESGE Working Groups structure

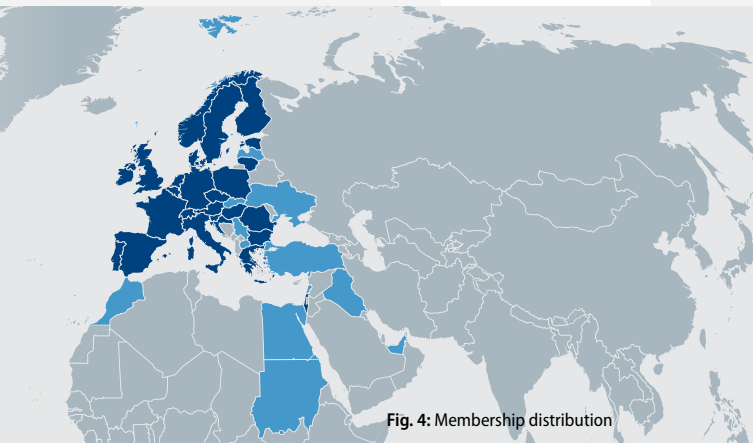
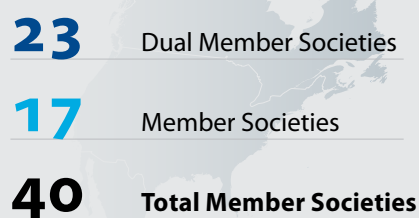
## Membership structure

### 1. Member Societies

ESGE currently has 40 Member Societies, from Europe, North Africa, and the Middle East (Fig. 4).

National societies of gastroenterology/gastrointestinal endoscopy or organized groups of gastrointestinal endoscopists that may be part of or independent from a national gastroenterological society are eligible for membership and recognition as a Member Society of ESGE. Society membership is not limited to one group per country. Regional societies wishing to join ESGE are entitled to apply for ESGE membership. Election into ESGE as a Member Society is voted on at the annual General Assembly.

Detailed rules and instructions on how to apply to become a Member Society are documented on [esge.com](http://esge.com).



To promote cooperation and collaboration, ESGE offers a Dual Membership Programme to ESGE Member Societies. This programme enables persons in our Member Societies to become Individual Members at a reduced annual rate. Currently, ESGE has 23 dual membership agreements in place (see [www.esge.com/membership](http://www.esge.com/membership)).

## 2. Individual Membership

ESGE Individual Membership is open to physicians with formal training in gastrointestinal endoscopy, to trainees in endoscopy and ESGENA nurses (Fig. 5).

ESGE Trainee Membership is available for up to 5 years for full time postgraduate trainees in gastroenterology and/or surgery, internal medicine who are employed in a clinical unit with formal activity in gastrointestinal endoscopy. Exceptions are possible for Member Societies participating in the Dual Membership Programme that have stringent rules for trainees.

### Individual Membership growth

- Dual
- Trainee
- Regular
- Nurses

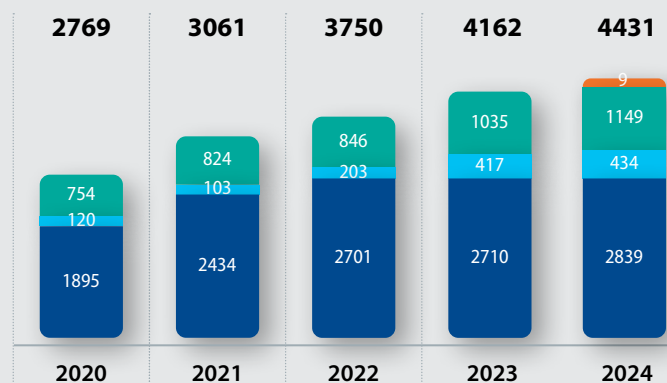


Fig. 5: Individual Membership growth 2020 - 2024

### REPRESENTED COUNTRIES

101

### AGE STRUCTURE

< 35	17%
36-49	42%
50-59	18%
60-69	11%
>70	3%
No data	9%

### GENDER

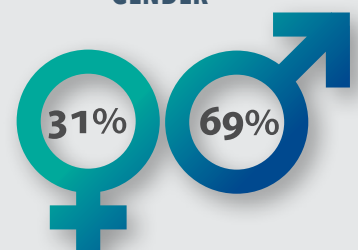


Fig. 6: Evaluation ESGE Individual Membership - Status January 2025



**European Society of Gastrointestinal Endoscopy**  
Working together in endoscopy to achieve optimal patient care.



## THE FACE OF ENDOSCOPY

Join to make a difference

### ESGE MEMBERSHIP BENEFITS

- Up to 50% reduced registration fee for ESGE Days
- Up to 20% reduced registration fees for ESGE endorsed events
- Free subscription to *Endoscopy* journal
- Discounted Hands-on Training
- Possibility to take part in the ESGE Endoscopy Camp (≤ 40 years of age)
- Opportunity to participate in Guidelines and Position Statements
- Exclusive access to the ESGE Academy, our brand new online library of learning materials
- Free access to Quality Check App
- Eligibility for Fellowship and Research Grants
- Involvement in ESGE research

And much more!



European Society of Gastrointestinal Endoscopy

**THE YOUNG FACE OF ENDOSCOPY**

Join to make a difference!

## Your benefits

- Special fees for membership & ESGE Days registration
- ESGE Endoscopy Camp - interactive hands-on training course
- Priority booking for ESGE Days Postgraduate Course, Hands-on Training & Social events
- Endoscopy* Journal
- Next Generation Award
- ESGE Academy – our new online learning platform
- Networking opportunities with European endoscopy experts
- Fellowship & Research Grants
- Mentorship Programme
- ... and more



esge.com

# 6

## OPERATIONAL / ADMINISTRATIVE MANAGEMENT

---

### ESGE Office

---

The ESGE Office manages ESGE's operational/administrative office, located in Munich, Germany and ensures the smooth day-to-day running of the Society. The Office is responsible for:

- Executive Committee and Governing Board management
- Member Society and Individual Membership organization
- Committee and Working Group coordination
- Marketing and communication
- Fundraising
- Corporate Partner coordination and organization
- ESGE Days congress management
- Financial and legal management
- ESGE Endoscopy Camp management
- ESGE Research Camp management
- ESGE Academy management
- [esge.com](http://esge.com) and [esgedays.org](http://esgedays.org) management

### Financial management

---

In accordance with the ESGE statutes, the Treasurer is responsible for handling ESGE finances by preparing, presenting, and then once approved, executing the ESGE annual budget. The budget is presented to, discussed, and approved by the Governing Board and the General Assembly. The detailed responsibilities of the ESGE Treasurer are described in the ESGE Rules of procedure.

#### 1. Income

ESGE requires adequate funding to support its core activities that are carried out by the Executive Committee, Governing Board, Committees, and Working Groups (Fig. 6).

##### 1.1 Membership fees

Individual and Society Members pay annual dues for ESGE membership. Individual Members receive a subscription to the journal *Endoscopy*, exclusive access to the ESGE Membership portal and to the ESGE Academy. Individual Members receive additional benefits from their ESGE membership, including reduced registration fees for the ESGE Days congress and ESGE-endorsed events, and opportunities to apply for ESGE grants and awards.

With the dual membership programme in place for Member Societies, Individual Members of these societies pay a reduced membership fee, and the Member Society fee is forgiven when a certain threshold of membership is reached.

### **1.2 Educational Grants**

ESGE receives unconditional educational grants from some of our corporate partners. These grants are essential funding to support the core educational activities of ESGE managed by Committees and Working Groups at the ESGE Endoscopy Camp.

### **1.3 Endorsed Activities**

Member Societies hosting educational events, such as conferences or courses, can request ESGE endorsement. The ESGE Education Committee provides endorsement, subject to review of a detailed educational event endorsement application submitted by the requesting Member Society and payment of an endorsement fee. Endorsed events are advertised by ESGE on our website and in our monthly newsletters.

### **1.4 Commercial Activities**

In order to increase Society funding, ESGE has identified activities that can be sponsored by corporate partners. These activities are transparently recognized as corporate-supported activities and regulated by a MedTech ([www.medtecheurope.org](http://www.medtecheurope.org)). The income from these activities covers the generated costs.

### **1.5 ESGE Days**

ESGE Days, has become the most relevant activity in terms of financial impact on ESGE. For this reason, the management of the ESGE Days budget is prepared, presented, and executed separately from that of other ESGE educational activities. The two primary sources of income from ESGE Days are registration fees and support from corporate partners. ESGE Days is fully compliant with the MedTech code of conduct.

### **1.6 ESGE Research Endorsement**

One of the main objectives of ESGE is to promote good quality research in the field of GI endoscopy. In addition to the financial research grants, ESGE offers endorsement to other research projects without ESGE funding. ESGE endorsement may enhance the chances of funding from other sources (Industry, National Grants bodies, Charities, etc.) and rapid dissemination of research ideas.

## 2. Expenses

ESGE allocates its entire funding to further its core educational activities in line with its strategic goals and to support the administration of the Society.

### 2.1 Society publications

Production of guidelines and quality support documents, position statements, investment in technology to support the numerous educational platforms, contribute to these costs.

### 2.2 Support to members

- **Educational activities**  
Overall, the costs of the Committees/Working Groups represent the main expenditures of ESGE. Each of these bodies has a dedicated budget to support its educational output.
- **Fellowship and research grants**  
Each year, the Education and Research Committees allocate a substantial part of the Society's budget to fellowship and research grants. The number and amount of such grants is decided by the Committee Chairs together with the ESGE Executive Committee.
- **Endoscopy Journal**  
Each ESGE Individual Member receives the journal Endoscopy (both online and hardcopy versions), purchased on their behalf by ESGE.
- **ESGE Academy**  
E-Learning platform of high-quality ESGE material including live endoscopy, webinars, training videos, publications and ESGE Days sessions. Accessible exclusively by our members.

### 2.3 Administration costs

These include the costs of the ESGE Office Team, the Office in Munich, external suppliers, legal advisers, travel to meetings, and accountants/tax advisors.

### 2.4 ESGE Days congresses

The costs of ESGE Days include the organization of the congress, the congress venue, support for the Scientific Committee that prepares the scientific programme, and support for the travel and lodging costs of invited congress faculty.

### 2.5 ESGE Endoscopy Camp

The costs of ESGE Endoscopy Camp include the organization of the training, the training venue, supplier costs for the Hands-On Training, support for the travel and lodging costs of invited congress faculty.

### 2.6 ESGE Research Camp

The costs of ESGE Research Camp include the organization of the event, the event venue, supplier costs, materials, support for travel and lodging costs for the faculty.

# 7

## PARTNER SOCIETIES





**European Society of  
Gastrointestinal Endoscopy**

# ESGE - The Home of Endoscopy

## Contact

### ESGE Office

Landwehrstraße 9  
80336 Munich, Germany

T +49-89-907 79 36-0  
F +49-89-907 79 36-20  
office@esge.com  
www.esge.com

f @esge.endoscopy  
x @ESGE\_news  
in european-society-of-  
gastrointestinal-  
endoscopy-esge

**esge.com**