

Endoscopic Ultrasonography *Live 2010*

*Therapeutic EUS
The Next Frontier*



October 8 – 10, 2010

Fairmont Chicago Millennium Park

Chicago, Illinois

Course Directors

Irving Waxman, MD

Professor of Medicine and Surgery
Director of The Center for Endoscopic
Research and Therapeutics (CERT)
The University of Chicago

William R. Brugge, MD

Professor of Medicine
Harvard Medical School
Director of GI Endoscopy
Massachusetts General Hospital

Register online cme.uchicago.edu/courses

CONFERENCE DESCRIPTION

Endoscopic ultrasound (EUS) has become a widespread endoscopic technique in the diagnosis, staging, and biopsy of gastrointestinal malignancies. High resolution imaging of the pancreas has also been a major strength of EUS. A series of lectures, demonstrations, and tutorials will be conducted by a faculty with noted expertise in EUS. Endoscopic ultrasonography (EUS) has emerged as an important new modality. The purpose of this course is to provide a critical review of the role of EUS in gastroenterology, surgery and oncology. This course will provide a thorough update of the most recent advances in endosonographic technology and equipment, and a step-by-step guide to performing the procedure.

LEARNING OBJECTIVES

After attending this educational activity, participants will be able to:

- *discuss the most recent advances in endosonographic technology and equipment;*
- *describe the endoscopic EUS procedure and its role in the specialties of gastroenterology, surgery and oncology;*
- *explain the applications for the radial, sector-scanning echoendoscope and the curved linear-array echoendoscope, including EUS-guided fine needle aspiration and EUS probes;*
- *identify the indications for tissue elastography.*

Please join us for what promises to be an informative and thorough conference!

TARGET AUDIENCE

This conference will offer gastroenterologists, endoscopists, surgeons, and nurses an opportunity to review the indications and techniques used for EUS, fine needle aspiration (FNA), and injection therapy.

ACCREDITATION AND CREDIT DESIGNATION

The University of Chicago Pritzker School of Medicine is accredited by the Accreditation Council for Continuing Medical Education (ACCME) to provide continuing medical education for physicians. The University of Chicago Pritzker School of Medicine designates this educational activity for a maximum of **21 AMA PRA Category 1 Credits**[™]. Physicians should only claim credit commensurate with the extent of their participation in the activity.

Nurses and other health professionals will receive a Certificate of Attendance. For information on applicability and acceptance, please consult your professional licensing board.

EDUCATIONAL GRANTS/COMMERCIAL SUPPORT

A complete listing of commercial support received will be provided in the activity materials.

LOCATION & ACCOMMODATIONS

Fairmont Chicago Millennium Park

We are pleased to host this conference at the Fairmont Chicago, Millennium Park hotel, where contemporary elegance blends seamlessly with a classic approach to luxury service. Experience this AAA Four-Diamond landmark, recognized for exceptional service and amenities on Condé Nast Traveler's Gold List and Travel & Leisure Magazine's Top 500 Hotels List.

Fairmont Chicago Millennium Park

200 North Columbus Drive

Chicago, IL 60601

Phone: 800-526-2008

Room Rates: \$239 Single or Double Rate

Check-in: 3:00 pm

Check-out: 12:00 pm

Rates do not include applicable state and local taxes, currently 15.4%. The "cut-off date" for reserving rooms is 5:00 pm (central time) on September 7, 2010. Reservations, received after the cut-off date, will be subject to prevailing rates and availability.

ROOM RESERVATIONS:

800-526-2008 or via our Passkey <https://resweb.passkey.com/go/endoscopiclive>

Please make your reservations directly with the Fairmont Chicago Millennium Park, and state that you are attending the "Endoscopic Ultrasonography Live" to receive this rate. We urge you to make your reservation early as rooms will sell out in Chicago.

The University of Chicago reserves the right to cancel or postpone this conference due to unforeseen circumstances. In the unlikely event this activity must be cancelled or postponed, the registration fee will be refunded; however, The University of Chicago is not responsible for any related costs, charges, or expenses to participants, including fees assessed by airline/travellodging agencies.

Chicago is truly a city with something for everyone! To help plan your stay in Chicago visit: www.choosechicago.com



CONFERENCE AGENDA

Friday October 8, 2010

7:00 am	REGISTRATION AND CONTINENTAL BREAKFAST	
7:50 - 8:00	Welcome <i>Drs. Irving Waxman and William R. Brugge</i>	
UPPER GASTROINTESTINAL EUS	<i>Moderators: Williams R. Brugge, MD, and Thomas Rosch, MD</i>	
8:00-8:20	Update on EUS Equipment and Accessories	<i>Brenna C. Bounds, MD</i>
8:20-8:40	Contrast Agents and Elastography. Next generation of EUS?	<i>Masayuki Kitano, MD, PhD</i>
8:40-9:00	EUS-Guided Confocal Endomicroscopy, Disruptive Technology?	<i>Vani Konda, MD</i>
9:00-9:20	Tissue Acquisition by EUS: As Good As It Gets?	<i>Thomas Savides, MD</i>
9:20-10:20	Live Transmissions	
10:20-10:45	REFRESHMENT BREAK	
PANCREATICO-BILIARY EUS	<i>Moderators: Thomas Savides, MD, and Brenna C. Bounds, MD</i>	
10:45-11:05	EUS for SMT's. Is Tissue the Issue?	<i>William Brugge, MD</i>
11:05-12:05 pm	Live Transmission	
12:05-1:05	LUNCH	
	<i>Moderators: Vanessa Shami, MD, and Laurent Palazzo, MD</i>	
1:05-1:25	What's the role of EUS in Detection and Staging of Pancreatico-Biliary Malignancies in 2010, is EUS Still Useful?	<i>Laurent Palazzo, MD</i>
1:25-2:25	Live Transmission	
2:25-2:45	EUS for the Detection of Pancreatic Neuroendocrine Tumors. Is Tissue Always Required?	<i>Rajesh N. Keswani, MD</i>
2:45-3:05	Cystic Lesions of the Pancreas: Who to Treat, Follow Up or Stop Surveillance	<i>Vanessa Shami, MD</i>
3:05-3:30	REFRESHMENT BREAK	
	<i>Moderators: Mitchell C. Posner, MD, Thomas Rosch, MD and William Brugge, MD</i>	
3:30-3:50	EUS for Gastrointestinal Cancers, The Surgical Oncologist Perspective	<i>Mitchell C. Posner, MD</i>
3:50-4:50	Live Transmissions	
4:50-5:20	Does EUS Have a Role in Chronic and Autoimmune Pancreatitis?	<i>Thomas Savides MD</i>
5:20-6:00	EUS Video Quiz	
6:00 pm	ADJOURN AND WELCOME RECEPTION	

Program agenda and speaker selection subject to change.

Saturday October 9, 2010

7:30 am CONTINENTAL BREAKFAST

ADVANCED EUS *Moderators: Andrew Ross, MD, Mark Ferguson, MD and Vanessa Shami, MD*

8:00-8:20 EUS for Esophageal Cancer: Is it Still Necessary? *Thomas Rosch, MD*

8:20-8:40 Is EUS Necessary Prior to Endoscopic Ablation in Barrett's? *Irving Waxman, MD*

8:40-9:00 EUS and Esophageal Cancer, The Thoracic Oncology Perspective *Mark Ferguson, MD*

9:00-10:00 Live Transmissions

10:00-10:25 REFRESHMENT BREAK

Moderators: Thomas Savides, MD and Masayuki Kitano MD, PhD

10:25-10:40 Complications of EUS *Shailesh Bajaj, MD*

10:40-11:00 Techniques in Cytology: How to Maximize Your Yield *Tatjana Antic, MD*

11:00-12:00 pm Live Transmissions

12:00-1:00 LUNCH

Moderators: Brenna C. Bounds, MD and Laurent Palazzo, MD

1:00-1:20 EUS-Guided FNI, Change in Oncological Paradigm? *Jennifer Chennat, MD*

1:20-1:40 EUS-Guided Drainage of Pancreatic Fluid Collections: How, When, Why, on Whom? *Andrew Ross, MD*

1:40-2:00 EUS-Guided Angiographic Intervention *Jose Carlos Subtil Inigo, MD*

2:00-3:00 Live Transmissions

3:00-3:30 REFRESHMENT BREAK

Moderators: Thomas Savides, MD and Thomas Rosch, MD

3:30-3:50 EUS Guided Pancreatico-Biliary Drainage *Vanessa Shami, MD*

3:50-4:50 Live Transmissions

4:50-5:10 Does EUS Play a Clinical Role in Rectal Cancer Staging? *Laurent Palazzo, MD*

5:10-5:30 The Future of EUS, Verge of Extinction or Dawn of a New Era? *Thomas Rosch, MD*

5:30 pm ADJOURN

FACULTY DISCLOSURE

It is the policy of the University of Chicago to ensure balance, independence, objectivity, and scientific rigor in all its individually sponsored or jointly sponsored educational activities. Individuals who are in a position to control the content of this educational activity are required to disclose all relevant financial relationships with any commercial interest related to the subject matter of the educational activity. Mechanisms to ensure that presentations are free from commercial bias are in place. Faculty will also disclose any off-label and/or investigational use of pharmaceuticals or instruments discussed in their presentation. Full disclosure of this information will be published in the activity materials.



This course is endorsed by the American Society for Gastrointestinal Endoscopy

Sunday October 10, 2010

9:00 am-2:00 pm **Final Examination in EUS: Skills Assessment and Training (SAT) Program**
Participants will be evaluated by the instructors using hands-on demonstrations and multiple choice questions. Program intended for nurses and physicians.

SIX LEARNING-TESTING STATIONS (ALTERNATING WITH THE SAT LECTURES)

Brenna C. Bounds, MD, Vanessa Shami, MD, Andrew Ross, MD, Thomas Savides, MD, Jennifer Chennat, MD, Rajesh Keswani, MD, Shailesh Bajaj, MD, E. Madrigal, MD, Laurent Palazzo, MD, Thomas Roesch, MD, Irving Waxman, MD

1. Esophageal mass staging and FNA
2. Gastric submucosal mass evaluation and EMR
3. Lymph node imaging and FNA
4. Pancreatic Cyst FNA
5. Liver mass and ascites FNA
6. Pancreatic pseudocyst drainage

OVERVIEW LECTURES (ALTERNATING WITH THE SAT DEMONSTRATIONS)

1. Final exam questions with answers (UGI)
2. Final exam questions with answers (Pancreatic Biliary)

FACULTY

COURSE DIRECTORS

Irving Waxman, MD

*Professor of Medicine and Surgery
Director of The Center for Endoscopic Therapeutics
(CERT) The University of Chicago*

William R. Brugge, MD

*Professor of Medicine
Harvard Medical School
Director of GI Endoscopy
Massachusetts General Hospital*

Tatjana Antic, MD

*Assistant Professor of Pathology
University of Chicago*

Shailesh Bajaj, MD

*Clinical Assistant Professor
Northshore University Health System*

Brenna C. Bounds, MD

*Instructor in Medicine
Harvard Medical School
Associate Physician
Massachusetts General Hospital*

Jennifer Chennat, MD

*Assistant Professor of Medicine
Section of Gastroenterology
University of Chicago*

Mark Ferguson, MD

*Professor of Surgery
University of Chicago*

Jose Carlos Subtil Iñigo, MD

*Specialist in Gastroenterology
University Hospital of Navarra
Pamplona, Spain*

Rajesh N. Keswani, MD

*Assistant Professor of Medicine
Division of Gastroenterology
Northwestern University Feinberg School of Medicine*

Masayuki Kitano MD, PhD

*Department of Gastroenterology and Hepatology,
Kinki University School of Medicine
Osaka-Sayama, Japan*

Vani Konda, MD

*Instructor of Medicine
Section of Gastroenterology
University of Chicago*

Erica Madrigal, MD

*Advanced Endoscopy Fellow
University of Chicago*

Laurent Palazzo, MD

*GI Endoscopist
Trocaadero Clinic
Paris, France*

Mitchell C. Posner, MD

*Thomas D. Jones Professor of Surgery
Chief, Section of General Surgery
University of Chicago*

Thomas Roesch, MD

*Medical Director of the Department of
Interdisciplinary Endoscopy
University Medical Center Hamburg-Eppendorf
Hamburg, Germany*

Andrew Ross, MD

*Medical Director, Gastrointestinal Research
Digestive Disease Institute
Virginia Mason Medical Center*

Thomas Savides, MD

*Professor of Clinical Medicine
UC San Diego Medical Center*


Vanessa Shami, MD


*Associate Professor of Medicine
Director of Endosonography
University of Virginia*




REGISTRATION FORM

HOW TO REGISTER

 **ONLINE:** <http://cme.uchicago.edu/courses>

 **MAIL:** The University of Chicago
Center for Continuing Medical Education
c/o EUS 2010
950 East 61st Street, Suite 101
Chicago, IL 60637

 **FAX** **Credit Card Payments Only**
to: 773-702-1736

Course Fees	
<input type="checkbox"/> Physicians	\$650
<input type="checkbox"/> Nurses & Other Health Professionals	\$400
<input type="checkbox"/> Residents/Fellows (with letter of verification)	\$400

The registration fee includes course materials, continental breakfasts, refreshment breaks, lunch, and welcome reception. You may register online, via fax, or US Mail. **While registration is open until the start of the meeting, we encourage early registration to enable us to provide the best possible service to participants.**

CONTACT INFORMATION

Name _____ Degree _____

Specialty _____

Organization _____

Preferred Mailing Address _____

City _____ State _____ Zip _____

Phone _____ Fax _____

Email _____

You must check this box if you do not want your US mailing address shared with conference participants and exhibitors.

CANCELLATION POLICY

If you cancel your participation in this conference, your registration fee, less a \$75 administrative fee, will be refunded when written notification is received by September 7, 2010. **No refunds will be made after September 7, 2010.**

ACCESSIBILITY

The University of Chicago is committed to providing equal access appropriate to need and circumstance and complies fully with the legal requirements of the Americans with Disabilities Act. If you are in need of special accommodation, please contact our office at 773-702-1056 or via email at cme@bsd.uchicago.edu.

PAYMENT

Check enclosed (U.S. funds only), payable to **The University of Chicago (Tax ID# 36-2177139)**

Charge \$ _____ to my MasterCard Visa American Express

Name as it appears on card _____

Card # _____ Exp. Date _____ / _____

Signature _____

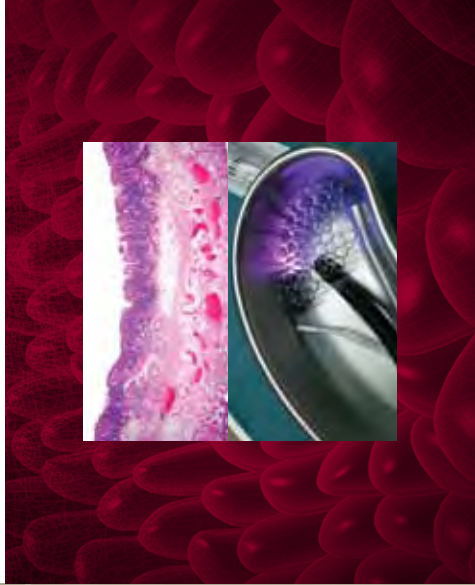
For additional information about this activity, please contact the Center for Continuing Medical Education at 773-702-1056.

October 8 – 10, 2010

**Endoscopic Ultrasonography
Live 2010**

*Therapeutic EUS
The Next Frontier*

Fairmont Chicago Millennium Park
Chicago, Illinois



PLEASE POST