

# 2 Days of Live Demonstrations

**“EUS meets  
New Advancing  
Technologies”**



**Tel-Aviv · May 30–31, 2010**

## **Scientific Committee**

- President: M. Giovannini (Marseille, France)
- Host: E. Santo (Tel-Aviv, Israël)
- P. G. Arcidiacono (Milan, Italy)

[www.euro-eus.com](http://www.euro-eus.com)

**Program**



## Dear Friends and Colleagues,

On behalf of the Euro EUS scientific committee and as your host for our 8<sup>th</sup> annual meeting I would like to greet you with the warmest welcome to Israël.

Following the tradition of excellence of this workshop we are proud to present our distinguished faculty consisting of many world known experts in EUS and endoscopy at large ...

Together we will bring you the latest developments and technologies in the field of endosonography defining the role of EUS in the wider frame of modern digestive endoscopy.

We encourage you to take advantage of the opportunity to present your work and achievements and to actively participate in the various debates and discussions.



The core element of this workshop is the live demonstration – we will present 9 hours of high quality live demos with a wide range of diagnostic and complex therapeutic procedures.

The city of Tel-Aviv, whose motto is a “city without intermission”, with its sunny beaches makes a perfect setting for this meeting.

This country, with its history and holy places certainly creates a unique atmosphere that inspires us all.

We are committed to the success of this workshop and we are sure that you will enjoy a profound professional and personal experience.

Shalom and see you all soon,

M. Giovannini

E. Santo

**Euro EUS 2010 Tel-Aviv**



**“EUS meets New Advancing Technologies”**

|                      |   |
|----------------------|---|
| <b>08:00 – 08:45</b> | <b>Registration</b>   |
| <b>08:45 – 09:00</b> | <b>Welcome</b><br>M. Giovannini (Marseille, France), E. Santo (Tel-Aviv, Israël)  |
| <b>09:00 – 10:00</b> | <b>LIVE DEMONSTRATION</b><br>Moderators: F. Hagenmüller (Hamburg, Germany)<br>C. F. Dietrich (Bad Mergentheim, Germany)   |
| <b>10:00 – 10:30</b> | <b>State-of-the-art lecture</b><br>Pancreatic cancer screening<br>J. W. Poley (Rotterdam, The Netherlands)  |
| <b>10:30 – 11:00</b> | <b>Coffee Break</b>   |
| <b>11:00 – 12:00</b> | <b>LIVE DEMONSTRATION</b><br>Moderators: F. Hagenmüller (Hamburg, Germany)<br>S. Carrara (Milan, Italy)   |
| <b>12:00 – 12:30</b> | <b>Comments on live demonstrations</b>  |
| <b>12:30 – 13:00</b> | <b>Oral Communications</b><br>Moderators: S. Carrara (Milan, Italy)<br>J. Lachter (Haifa, Israël)   |
| <b>13:00 – 14:00</b> | <b>Lunch</b>  |
| <b>14:00 – 15:00</b> | <b>LIVE DEMONSTRATION</b><br>Moderators: F. Hagenmüller (Hamburg, Germany)<br>Y. Kopelman (Hadera, Israël)  |
| <b>15:00 – 15:30</b> | <b>Oral Communications</b><br>Moderators: C. F. Dietrich (Bad Mergentheim, Germany)<br>O. Barkay (Tel-Aviv, Israël)   |
| <b>15:30 – 16:00</b> | <b>Coffee Break</b>   |
| <b>16:00 – 17:00</b> | <b>LIVE DEMONSTRATION</b><br>Moderators: F. Hagenmüller (Hamburg, Germany)<br>M. Buthani (Houston, USA)   |
| <b>17:00 – 17:30</b> | <b>Comments on live demonstrations</b>  |
| <b>17:30 – 18:00</b> | <b>Round Table (I):</b><br>IPMN – Diagnosis, Follow-up, Surgery<br>Chair: M. Buthani (Houston, USA)<br>Panel: P. G. Arcidiacono (Milan, Italy)<br>A. Blachar (Tel-Aviv, Israël)<br>J. Klausner (Tel-Aviv, Israël) |
| <b>18:00</b>         | <b>End of the Program</b>   |

**Euro EUS 2010 Tel-Aviv**



**“EUS meets New Advancing Technologies”**

|                      |  |
|----------------------|--|
| <b>08:30 – 09:30</b> | <b>LIVE DEMONSTRATION</b><br>Moderators: F. Hagenmüller (Hamburg, Germany)<br>J. Lachter (Haifa, Israël)   |
| <b>09:30 – 10:00</b> | <b>State-of-the-art lecture</b><br>EUS and NOTES<br>A. Fritscher-Ravens (Kiel, Germany)  |
| <b>10:00 – 10:30</b> | <b>Oral Communications</b><br>Moderators: J. Annema (Leiden, The Netherlands)<br>A. Geller (Petach Tikva, Israël)  |
| <b>10:30 – 11:00</b> | <b>Coffee Break</b>  |
| <b>11:00 – 12:00</b> | <b>LIVE DEMONSTRATION</b><br>Moderators: F. Hagenmüller (Hamburg, Germany)<br>A. Geller (Kfar Saba, Israël)  |
| <b>12:00 – 12:30</b> | <b>Beat the Experts:</b><br>M. Buthani (Houston, USA), J. Devière (Brussels, Belgium),<br>A. Fritscher-Ravens (Kiel, Germany),<br>J. W. Poley (Rotterdam, The Netherlands), A. Sahaï (Montreal, Canada)                        |
| <b>12:30 – 13:00</b> | <b>Round Table (II):</b><br>Therapeutic EUS: Guided pancreatico biliary procedures<br>Chair: J. Devière (Brussels, Belgium)<br>Panel: M. Buthani (Houston, USA)<br>E. Bories (Marseille, France)<br>I. Kori (Tel-Aviv, Israël) |
| <b>13:00 – 14:00</b> | <b>Lunch</b>   |
| <b>14:00 – 15:00</b> | <b>LIVE DEMONSTRATION</b><br>Moderators: F. Hagenmüller (Hamburg, Germany)<br>A. Saftoiu (Craiova, Romania)  |
| <b>15:00 – 15:30</b> | <b>Oral Communications</b><br>Moderators: A. Saftoiu (Craiova, Romania)<br>O. Barkay (Tel-Aviv, Israël)  |
| <b>15:30 – 16:00</b> | <b>Coffee Break</b>  |
| <b>16:00 – 17:00</b> | <b>Round Table (III):</b><br>Pancreatic fluid collections<br>Chair: A. Sahaï (Montreal, Canada)<br>Panel: M. Ben Haim (Tel-Aviv, Israël)<br>M. Giovannini (Marseille, France)<br>A. Suissa (Haifa, Israël)                     |
| <b>17:00 – 17:30</b> | <b>Comments on live demonstrations</b>   |
| <b>17:30</b>         | <b>Closing remarks</b><br>E. Santo (Tel-Aviv, Israël), M. Giovannini (Marseille, France)   |



© COOK 2009

## Gain access when standard ERCP is not an option.

When you must access the pancreatobiliary system but the case is too challenging for standard ERCP, you need an innovative solution. And that's exactly what you get with Cook's new High Definition Ultrasound Access Needle - the world's first therapeutic EUS needle indicated for gaining access. It has the highly echogenic HD pattern like all needles in our full line of EchoTip Ultra EUS devices, which means you can more adequately assure the needle is within the target.

Cook Medical—Expanding the applications of advanced diagnostic and therapeutic EUS procedures.



**COOK** MEDICAL **EchoTip® Ultra**  
HIGH DEFINITION FINE NEEDLE ACCESS

AORTIC INTERVENTION | CARDIOLOGY | CRITICAL CARE | **ENDOSCOPY** | INTERVENTIONAL RADIOLOGY | PERIPHERAL INTERVENTION | SURGERY | UROLOGY | WOMEN'S HEALTH

## Scientific Committee

- **President: M. Giovannini**  
(Marseille, France)
- **Host: E. Santo**  
(Tel-Aviv, Israël)
- **P. G. Arcidiacono**  
(Milan, Italy)

## International Faculty

- **J. Annema**  
(Leiden, The Netherlands)
- **E. Bories**  
(Marseille, France)
- **M. Bhutani**  
(Houston, USA)
- **S. Carrara**  
(Milan, Italy)
- **J. Devière**  
(Brussels, Belgium)
- **C. F. Dietrich**  
(Bad Mergentheim, Germany)
- **A. Fritscher-Ravens**  
(Kiel, Germany)
- **F. Hagenmüller**  
(Hamburg, Germany)
- **J. W. Poley**  
(Rotterdam, The Netherlands)
- **A. Saftoiu**  
(Craiova, Romania)
- **A. Sahai**  
(Montreal, Canada)

## Israëli Faculty

- **O. Barkay**  
(Tel-Aviv)
- **M. Ben Haim**  
(Tel-Aviv)
- **A. Blachar**  
(Tel-Aviv)
- **A. Dancour**  
(Jerusalem)
- **A. Geller**  
(Petach Tikva)
- **J. Klausner**  
(Tel-Aviv)
- **Y. Kopelman**  
(Hadera)
- **I. Kori**  
(Tel-Aviv)
- **J. Lachter**  
(Haifa)
- **S. Marmor**  
(Tel-Aviv)
- **A. Melhem**  
(Tel-Aviv)
- **A. Suissa**  
(Haifa)



## Call for Papers

You are kindly invited to submit abstracts describing original research work on EUS and very instructive clinical cases that you wish to present at the congress as an oral communication.

**Please read the following guidelines for the submission of abstracts carefully before submitting your abstract:**

1. Authors presenting abstracts must be registered participants.
2. Abstracts can only be submitted in English and **only to the address to the right.**

3. Titles should contain no more than 70 characters, including space. The rest of the abstract text should contain no more than 250 words.
4. Authors' name, institution and city should be included. Please omit titles and degrees.
5. Single space all typing. Do not leave blank lines. Use standard abbreviations. Place a special or unusual abbreviation in parenthesis after the full word the first time it appears.
6. The abstract should be informative and clearly structured, containing:
  - an introduction with a brief statement of the study's specific objectives;
  - a summary of the results obtained;
  - a statement of the conclusions.
7. Please avoid references. However, if references are used they should be included in the text as: (Authors, journal, year, volume, pages).
8. Abstracts, which do not conform to the guidelines, will be returned to their authors for correction.

**All abstracts must be submitted no later than March 27, 2010.**

**Abstracts may be sent on CD-ROM, by mail or by e-mail to:**

- **Dr. Erwin Santo**  
Director of Invasive Endoscopy Unit  
Department of Gastroenterology and Liver Diseases  
Tel-Aviv Sourasky Medical Center  
6 Weizman St · Tel-Aviv, Israël  
Tel: +972-3-697 49 69  
Private Fax: +973-9-740 13 27  
E-mail:  
Email-erwin@tasmc.health.gov.il

All abstracts will be evaluated and reviewed by the Scientific Committee. Notification will be given by **April 26, 2010**. Please also remember to register for the congress.



## Registration

Pre-registration is required for this event.

| Profile  | Attendance | Until<br>April 16, 2010 | Until<br>May 23, 2010 | Until<br>May 31, 2010 |
|--|------------|-------------------------|-----------------------|-----------------------|
| <b>Physicians</b>                                      |            |                         |                       |                       |
|  | Full       | 350 €                   | 400 €                 | 450 €                 |
|  | 1 Day      | 175 €                   | 250 €                 | 300 €                 |
| <b>Nurses/Students</b>                                 |            |                         |                       |                       |
|  | Full       | 55 €                    | 75 €                  | 100 €                 |
|  | 1 Day      | 30 €                    | 50 €                  | 70 €                  |
| <b>Combined registration (1 Physician and 1 Nurse)</b> |            |                         |                       |                       |
|  | Full       | 375 €                   | 425 €                 | 475 €                 |
|  | 1 Day      | 190 €                   | 275 €                 | 325 €                 |

## Congress Dinner

Enjoy an evening on the beach!

**The congress dinner will take place on Sunday,  
May 30, 2010 at 20:00.  
The cost per person is 80 €.**

**Venue:** The Terrace.

## Hotel Reservation

Two hotels are suggested to you  
for your accommodation during the congress:

| Hotels                                   | Single | Double/Twin |
|--|--------|-------------|
| <b>David Intercontinental Hotel ****</b> |        |             |
| Standard room                            | 180 €  | 200 €       |
| DeLuxe room                              | 200 €  | 220 €       |
| <b>Dan Panorama Hotel ****</b>           |        |             |
| Standard room                            | 150 €  | 170 €       |

Prices include breakfast and service. Taxes are not included because tourists are not subject to VAT. Israeli Participants will be requested to pay the taxes when checking out.

**Hotel reservations can be made directly with the Congress Coordinator:**

- on-line through the website: [www.euro-eus.com](http://www.euro-eus.com)
- by sending the enclosed hotel reservation form by fax or by e-mail.

The congress venue is the David Intercontinental Hotel and the Dan Panorama Hotel is walking distance, the 2 hotels are next door from each other.



## Congress

### Dates:

**Euro EUS 2010 · May 30–31, 2010 · 08:30–18:00**

### All scientific sessions will take place at the Congress venue:

David Intercontinental Hotel · 12 Kaufman Street · Tel-Aviv 61501 · Israël  
Tel: +972-3-795 11 91 · Fax: +972-3-795 11 55

### A welcome desk will be opened on:

- **Friday May 28, 2010:** from 16:00 to 18:00
- **Saturday May 29, 2010:** from 18:30 to 20:30
- **Sunday May 30, 2010:** from 8:00 until the end of the sessions on Monday May 31, 2010.

### Language:

The language of the Euro EUS 2010 congress will be English.

### Accreditation:

Each participant will receive CME credits according to the regulations of the Israeli Board of Physicians, provided that the course evaluation forms have been completed and returned.



## Registration

### Registration Deadline:

- **Low price:** until April 16, 2010
- **Regular price:** from April 17 to May 23, 2010
- **Late/on site price:** from May 24 to May 31, 2010

### Registration can be made directly with the Congress Coordinator:

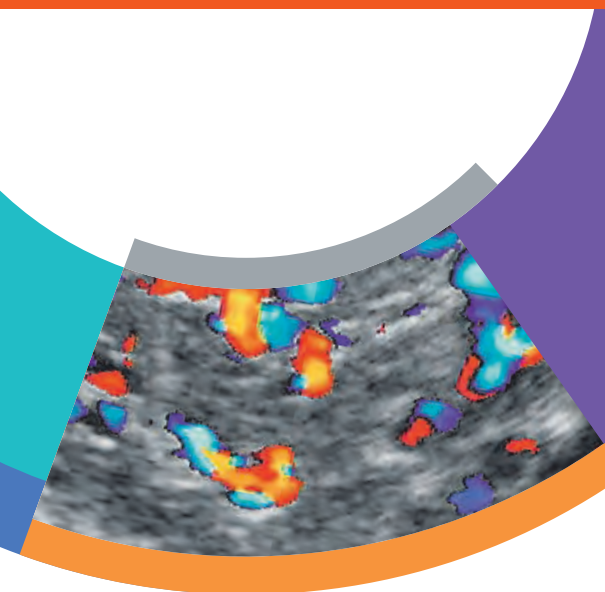
- on-line through the website: [www.euro-eus.com](http://www.euro-eus.com)
- by sending the enclosed registration form by fax or by e-mail.

The registration form is enclosed with this program or can be downloaded from the congress website.

## Congress Coordination

### Anne-France De Meyer

102, Avenue Carsoel – Bte 13  
1180 Brussels – BELGIUM  
Tel.: +32 2 375 36 26  
Fax: +32 2 375 47 84  
E-mail: [anne.france.de.meyer@skynet.be](mailto:anne.france.de.meyer@skynet.be)





## Payment

Payments are only accepted in Euro (€). No registration will be processed without payment. Payments can either be made online by credit card or by bank transfer.

For payment, please address your payment to our bank account and state the applicable keyword(s) on your bank transfer form: **"Euro EUS"**

Bank Account Euro EUS  
No. 001-4727588-78  
(BNP Paribas/Fortis, 99 Dieweg,  
1180 Brussels)  
Swift Code: GE BA BE BB  
IBAN Code: BE 69 0014 7275 8878

You will also find the bank details on the enclosed registration form for the congress. In order to avoid misunderstandings, participants are kindly requested to indicate their name, address and e-mail clearly on the forms.

The Congress Coordinator will not be responsible for tracking transfers without appropriate identification.

**Bank charges are the responsibility of the sender.**

### **Cancellation Policy:**

A refund of registration fees already paid, less 30% for administrative expenses, will be made to any participant unable to attend the congress if written notice has been sent to the Congress Coordinator before April 30, 2010.

For details about the registration fees, please refer to the related registration form.

**For ESGE members: a special 20% registration fee discount is available.**

**After payment, acknowledgement of the registration with the necessary details for the arrival of the participants in Tel-Aviv will be sent to all of them during April and May 2010.**

artwork designbüro

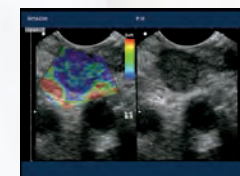


"Reliability has top priority with me".



## Hitachi Real-time Tissue Elastography (HI-RTE)

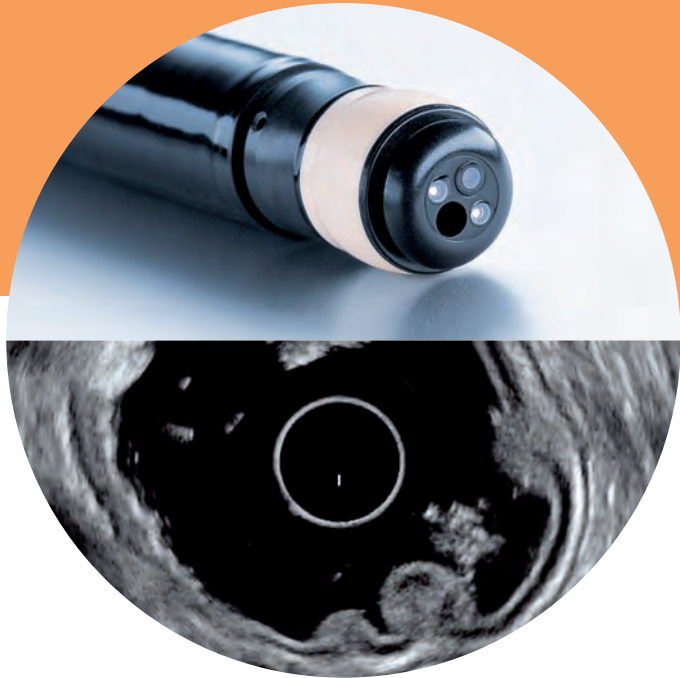
HI-RTE is an exciting innovation in ultrasound imaging which allows assessment and real-time colour display of tissue elasticity. With Hitachi's pioneering technology now adding a quantitative dimension – the technique has revolutionised the detection and visualisation of malignant disease and offers increased accuracy for tissue sampling in clinical areas such as the breast, prostate, thyroid and pancreas, and many more. For more information visit [www.HI-RTE.com](http://www.HI-RTE.com)



Malignant mediastinal lymphnode

**HI-RTE – Supporting Diagnostic Confidence.**

# Border crossing



Discover the PENTAX EUS K series. The 360° radial ultrasound model provides the endoscopist with a new level of diagnostic precision for all indicated application areas. Therapeutic interventions with maximum efficiency for EUS-FNA are offered by the longitudinal model. The unique image quality of the EBUSpro offers an uncompromising foundation for the diagnosis and staging of lymph nodes through EBUS-TBNA. See more at: [www.pentaxeurope.com](http://www.pentaxeurope.com)



PENTAX Europe GmbH · LIFE CARE · Julius-Vosseler-Straße 104 · 22527 Hamburg · Germany  
Tel.: +49 40 / 5 61 92 - 0 · Fax: +49 40 / 5 60 42 13 · E-mail: [medical@pentax.de](mailto:medical@pentax.de)

### Arriving in Israël

#### Airport customs:

If you do not want the visa to be stamped in your passport, customs personnel will apply it on a separate page that you will need to hand back when leaving Israël. Just make sure to let them know in time.

#### Working days in Israël:

are Sunday through Thursday. The week-end starts on Friday morning until Saturday night. Shabbat starts on Friday around 18:00 until Saturday around 18:00: just like a Sunday in most countries.

#### Currency:

The Israëlî currency is the Shekel:  
1 Euro = 5.54 Shekels  
1 USD = 3.75 Shekels  
This exchange rate may vary depending on the market.

#### VAT in Israël:

Tourists are not subject to VAT: our prices mentioned in the registration and hotel booking forms do not include VAT for this reason. Israëlî participants will be invoiced the tax amounts when checking out from the hotel. Tourists can get a tax refund on all purchases made in Israël from the dedicated office at Tel-Aviv Airport when leaving the country.

#### The weather:

In March, April and May it is spring time in Israel. This is undoubtedly the most pleasant season of the year, with very comfortable weather. Temperature in Tel Aviv usually ranges between 16 to 24 °C. May and June are wonderful for travelling with the best weather.



## Registration Forms

Enclosed you will find your personal copy of the congress registration form and the hotel booking form.

**You can also register online:**

[www.euro-eus.com](http://www.euro-eus.com)

We are looking forward  
to seeing you at the Congress!



## Partners



Cook Medical,  
Limerick, Ireland  
[www.cookmedical.com](http://www.cookmedical.com)



Hitachi Medical Systems  
Europe Holding AG,  
Wiesbaden, Germany  
[www.hitachi-medical-systems.de](http://www.hitachi-medical-systems.de)



PENTAX Europe GmbH,  
LIFE CARE,  
Hamburg, Germany  
[www.pentax.de](http://www.pentax.de)

[www.euro-eus.com](http://www.euro-eus.com)



Euro EUS 2010 is held with the support of Tel-Aviv Sourasky Medical Center and under the auspices of the European Society of Gastrointestinal Endoscopy (ESGE) and the American Society of Gastroenterology (ASGE).

For members of the ESGE, a special 20% registration fee discount is available.